



Stratospheric chemistry and aerosols

D.Fonteyn(@oma.be)

Belgisch Instituut voor Ruimte-Aëronomie
BIRA-IASB

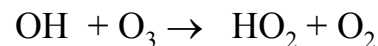
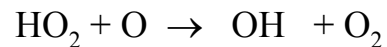
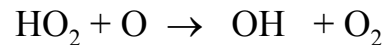
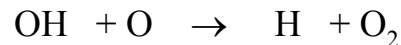
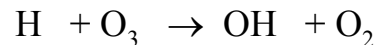
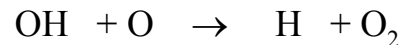
F. Daerden, Q. Errera, S. Chabrilat, S. Bonjean

Stratospheric chemistry

Gas phase chemistry

1. Chapman Cycle
2. Catalytic cycles

1. Hydrogen radicals (HO_x)

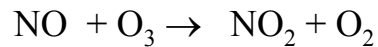
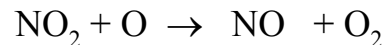


Hydrogen Source Gases: H_2O , CH_4

- Long term trends
- HO_x chemistry in the upper stratosphere and mesosphere

Stratospheric chemistry

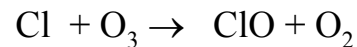
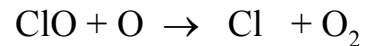
2. Nitrogen radicals (NO_y)



Nitrogen Source Gas: N_2O (and ...)

- Long term trends
- NO_y partitioning (in the lower stratosphere: aerosols)

3. Chlorine radicals (Cl_y)



Chlorine Source Gases: Organic Chlorine

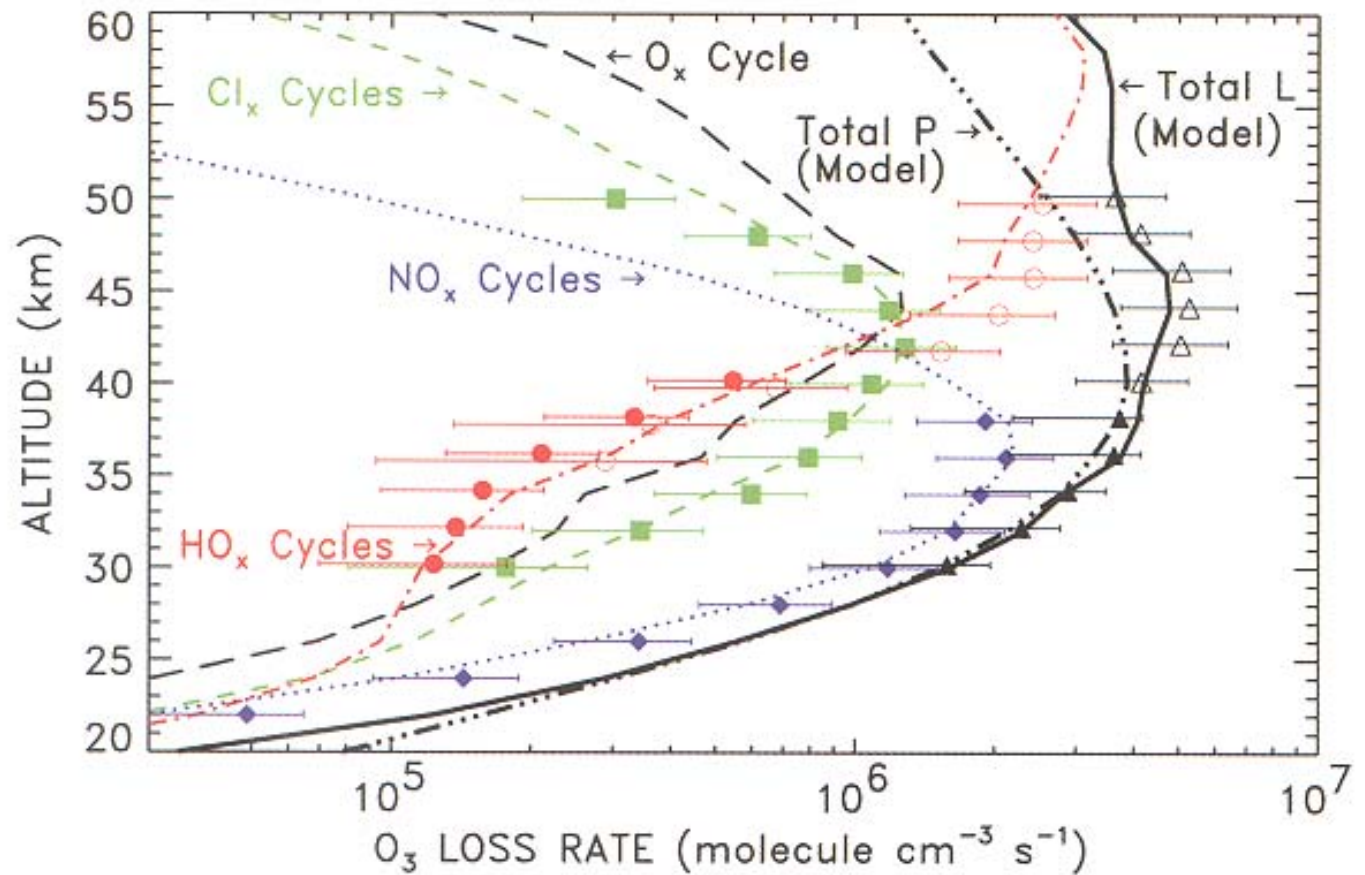
- Long term trends
- Cl_y partitioning (in the lower stratosphere: aerosols)

Ozone loss

35°N, September 1993

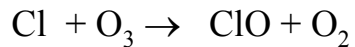
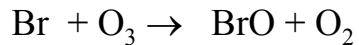
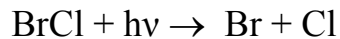
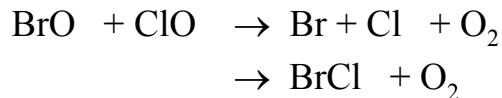
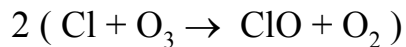
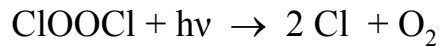
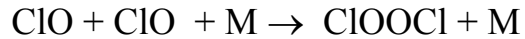
24 hour average

WMO, 1998



Lower Stratosphere

Gas phase chemistry triggered by
heterogeneous processing

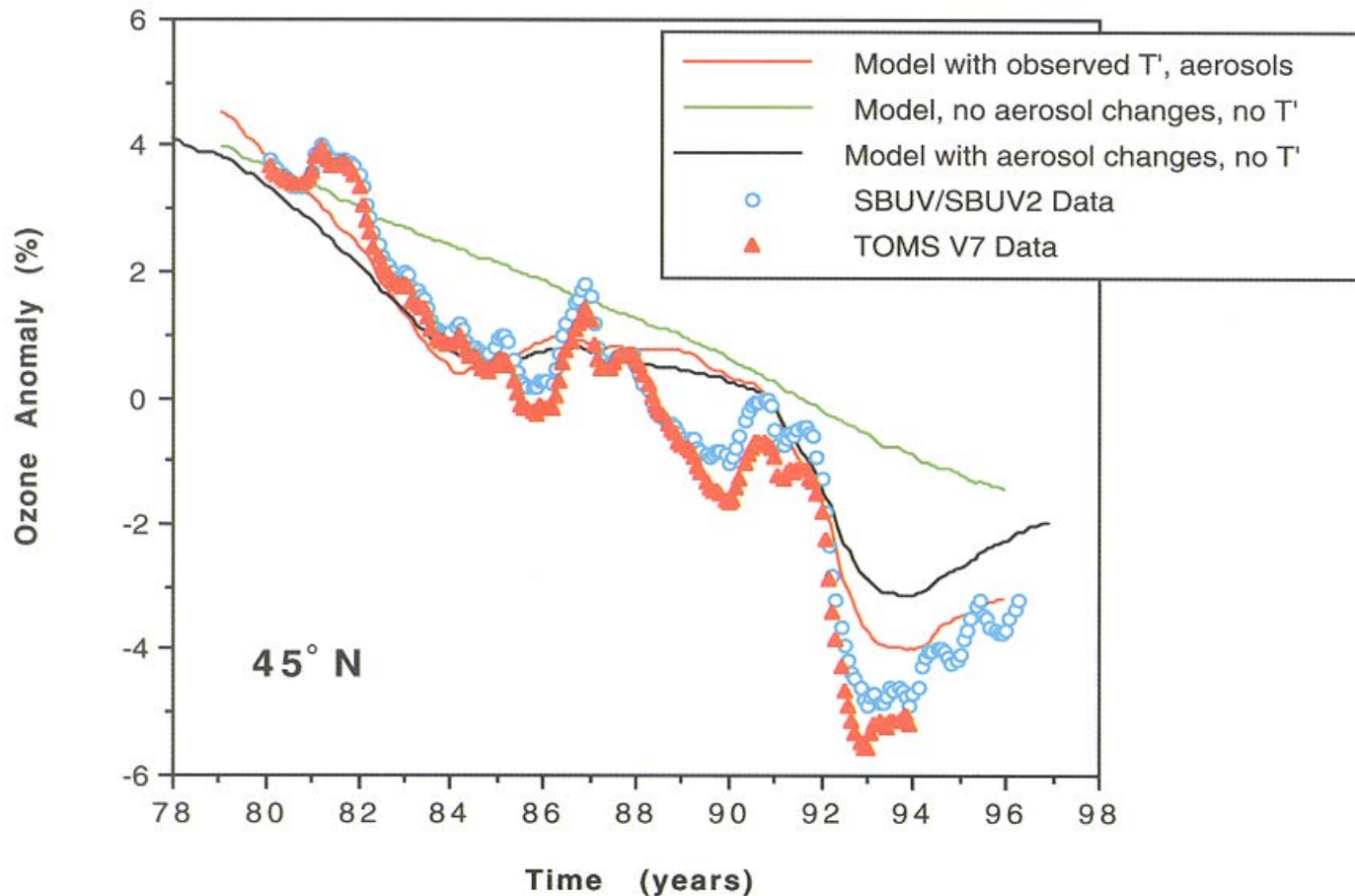


ClO_x/Cl_y & NO_x/NO_y

Polar Stratospheric Clouds

Aerosols (Pinatubo)

Lower Stratosphere Ozone Loss



What determines Ozone

- Source budgets: determines radicals budget
(emissions, transport, decay)
- Family budgets: determines radicals budget
(source decay, transport)
- Repartitioning: determines radicals budget
(chemistry, particle budgets)
- Particle budgets: determines radicals budget
(emission, microphysics, volcanic eruptions, ...)

(temperature, illumination, ...)

Nitrogen Source, N₂O

Data Assimilation: MIPAS constrained N₂O budget



Chemical forecast (same dynamical fields)



Assessment of the evolution of N₂O

Case study: Sept., 2002

Forecast initiated @ Sept. 2, 2002

Reminder non-operational MIPAS

Assimilation system

4D-var: (Talagrand & Courtier, 1987)

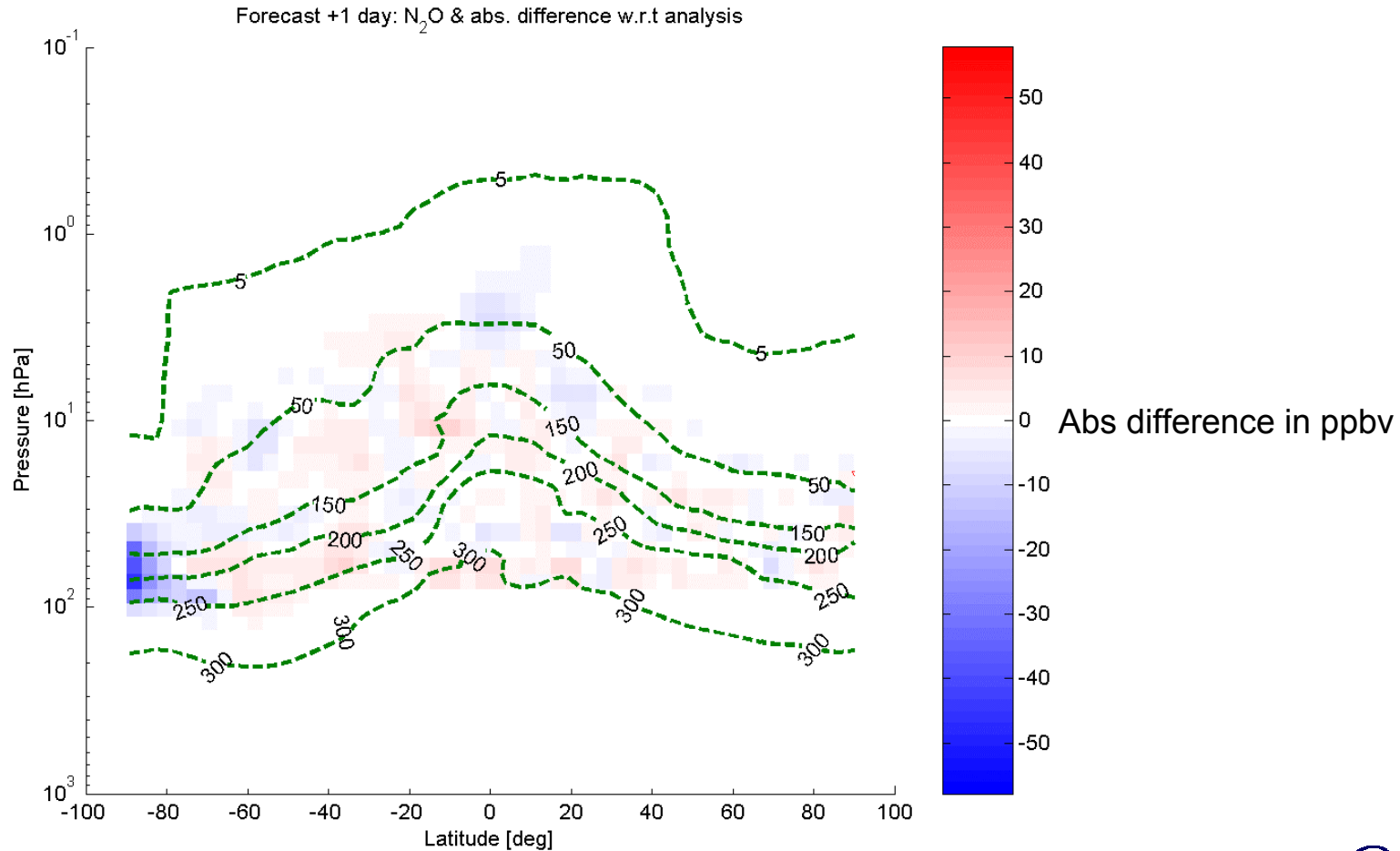
Model grid: horizontal: $3^{\circ}.75 \times 3^{\circ}.75$ (96 x 49 pts)
vertical: 37 pressure levels, surface \rightarrow 0.1 hPa
(subset of ECMWF hybrid levels, keeping stratospheric levels)

Chemistry: 57 chemical species

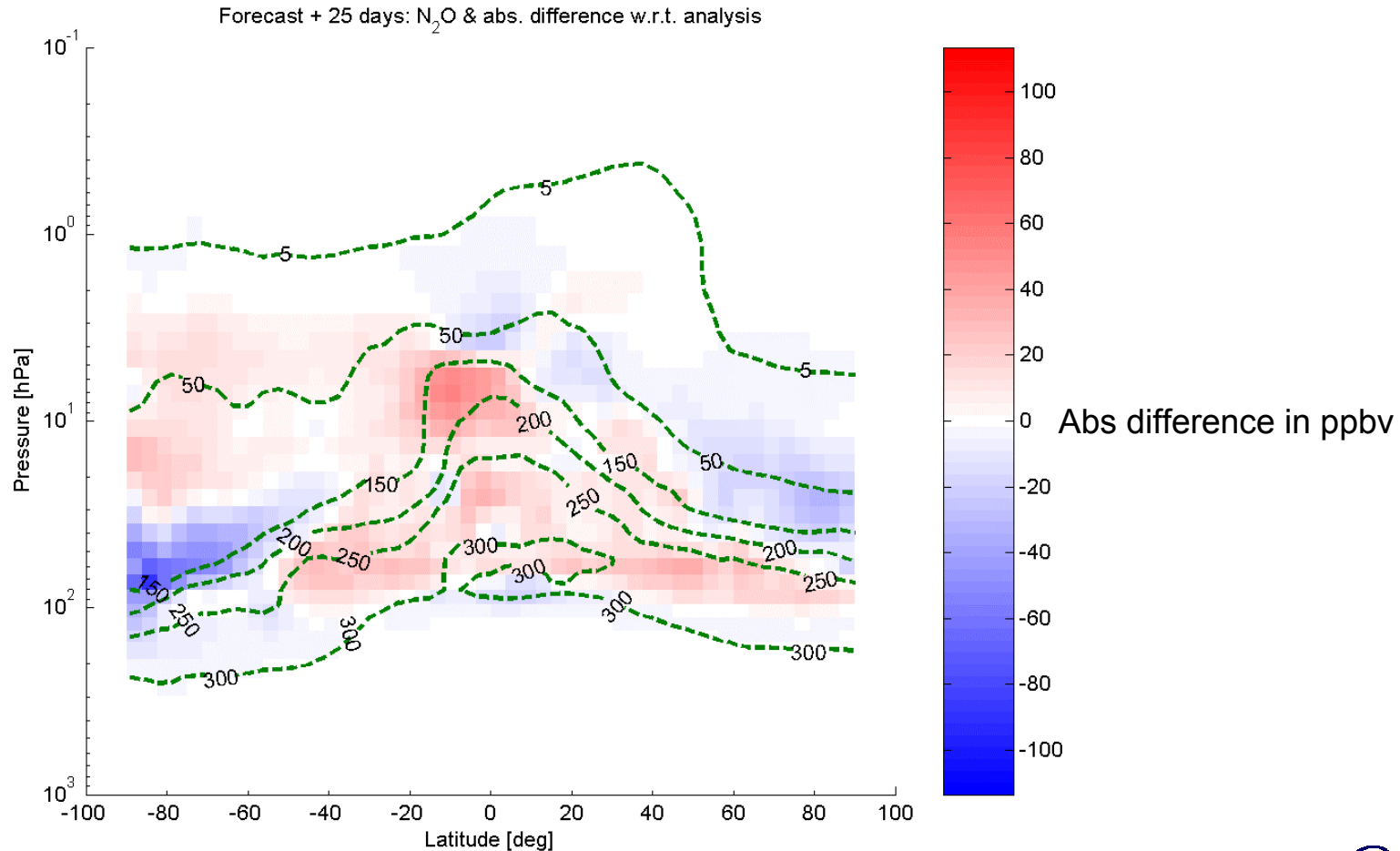
PSC: 4 types of PSC particles (36 size bins)

Dynamics: Eulerian
driven by ECMWF 6h analyses
advection by Lin & Rood (1996) with 30' time step

Forecast vs analysis



Forecast vs analysis



Forecast vs analysis ?

Cause of difference

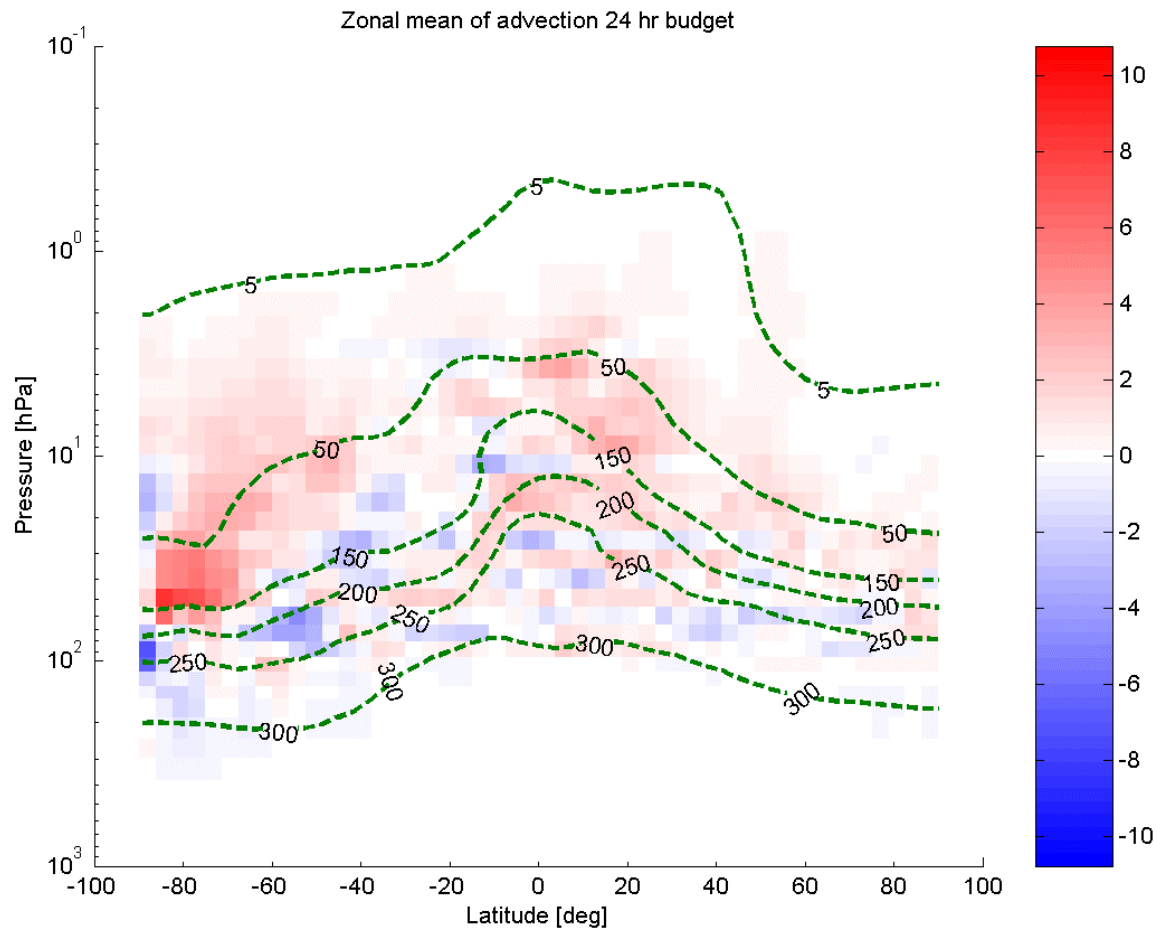
↓ (4D – VAR, history)

Local advection / chemistry tendency
(24 hr integrated tendency)

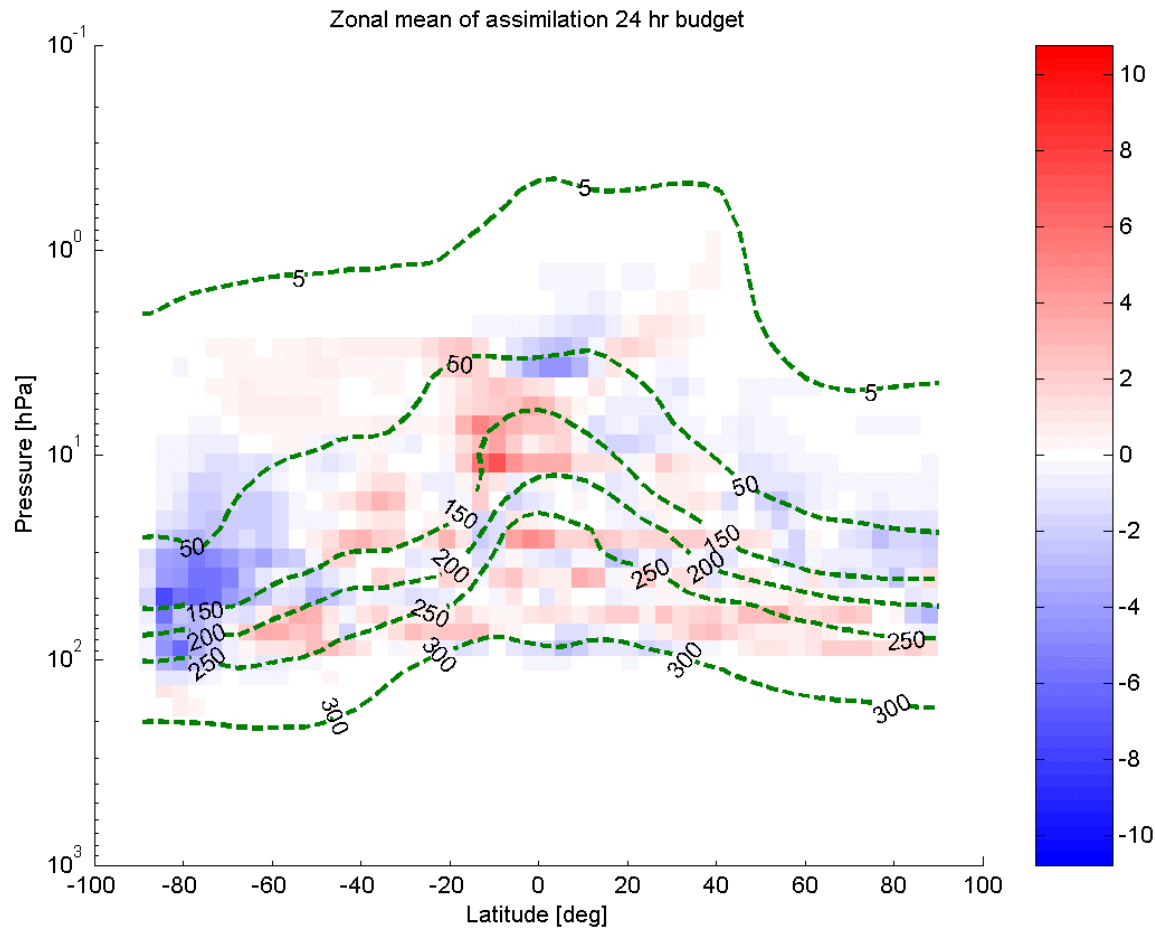
↓

Comparison with local assimilation “tendency”: $(\text{analysis} - \text{first guess})_{t_0}$
September mean

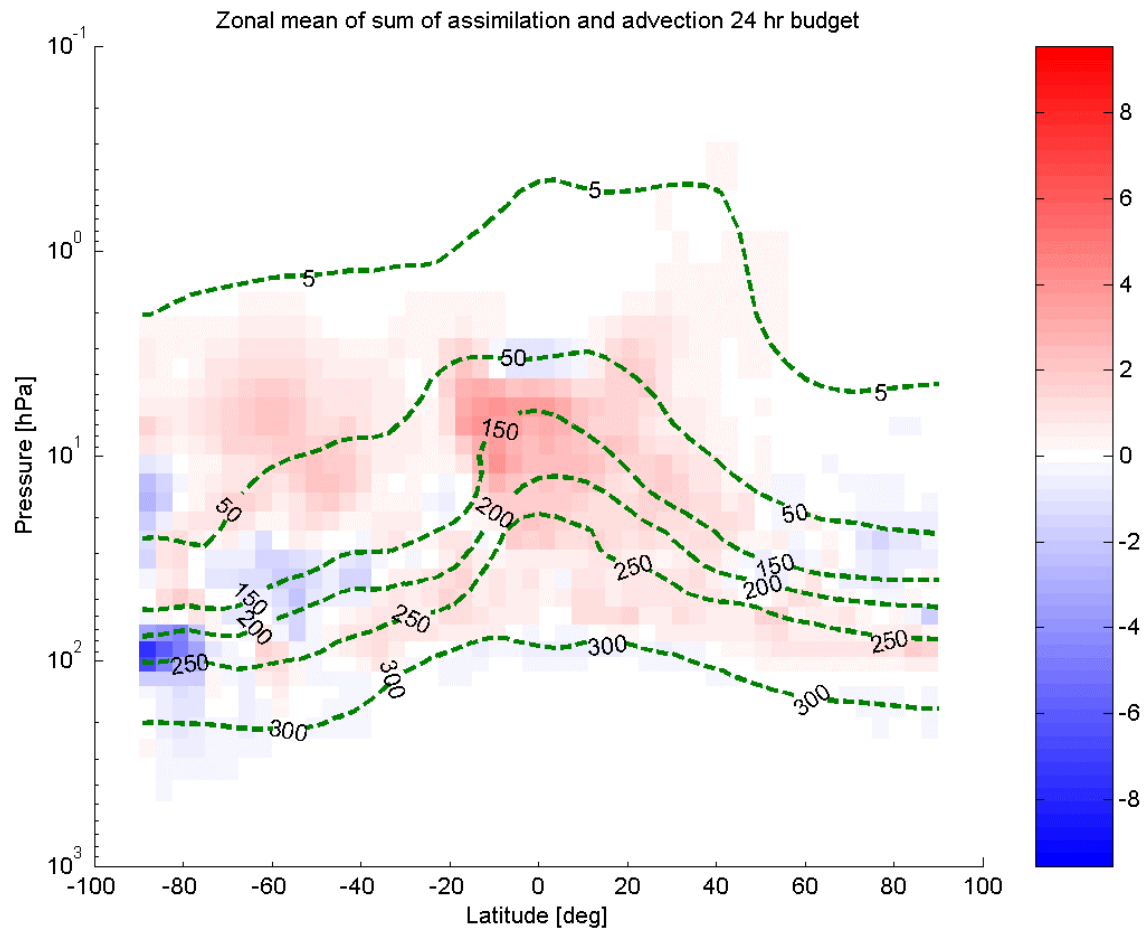
24 hr tendencies



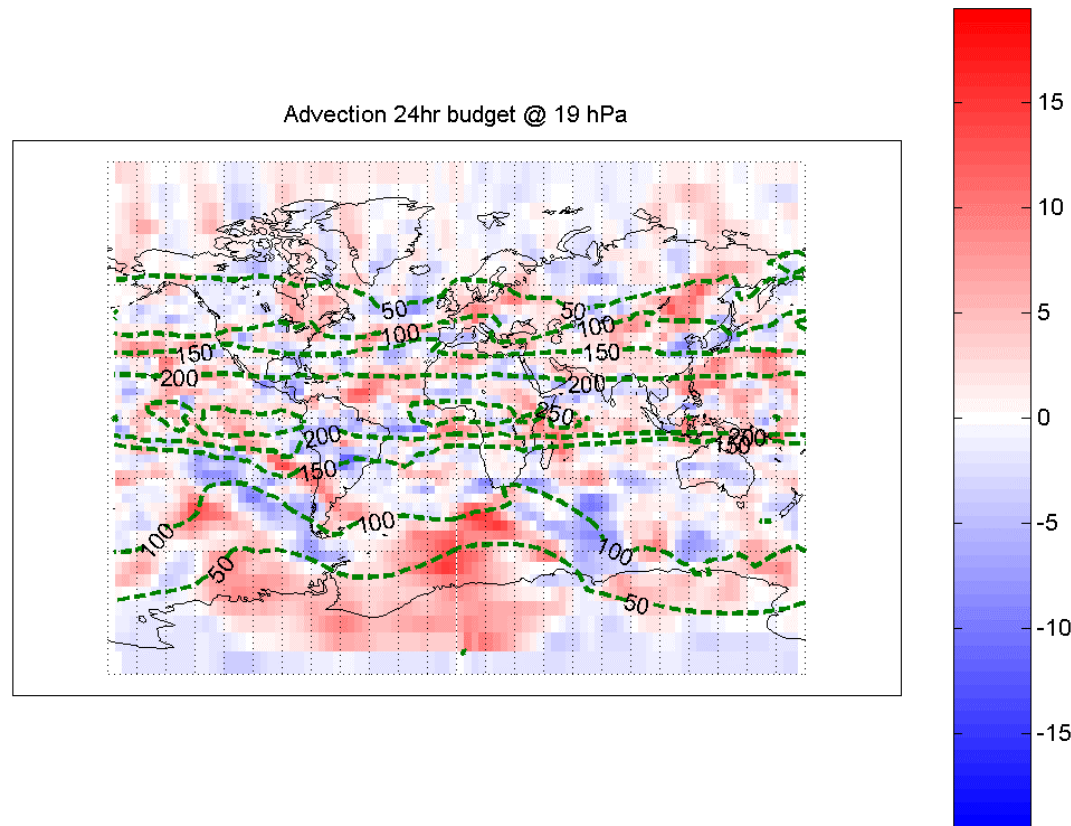
24 hr tendencies



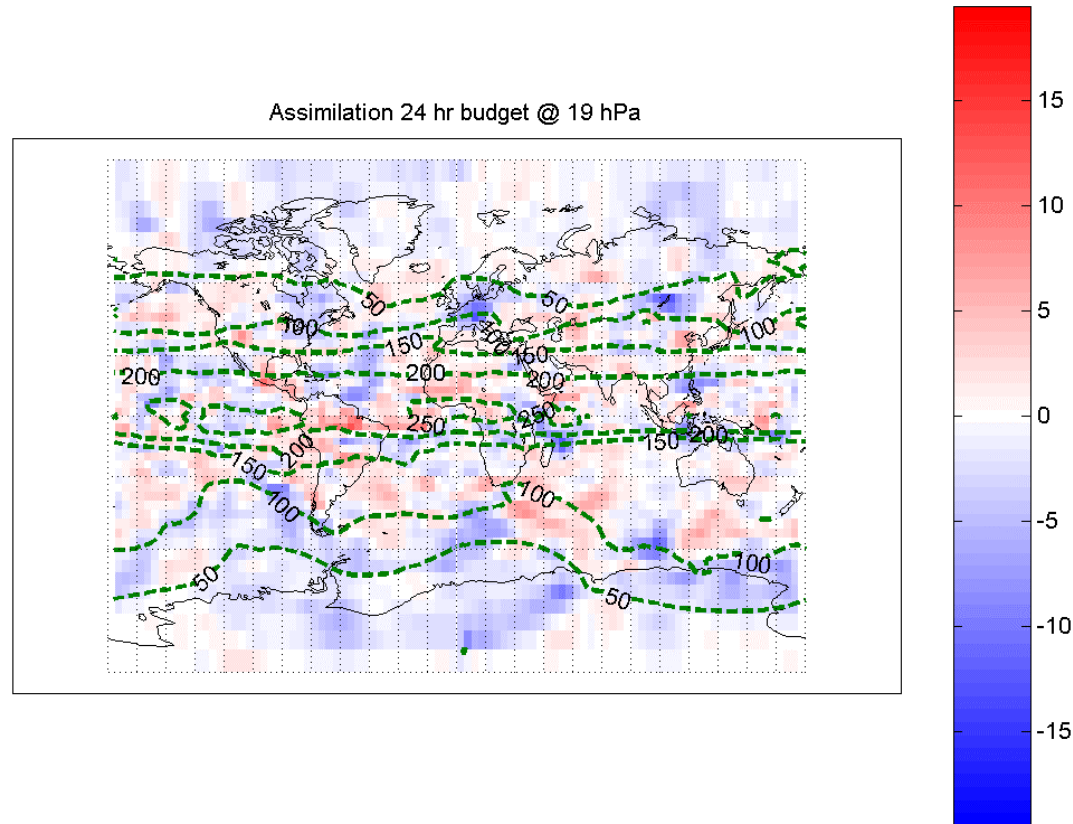
24 hr tendencies



24 hr tendencies

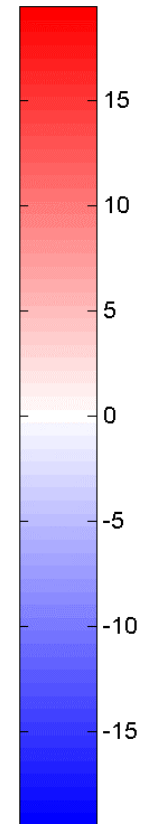
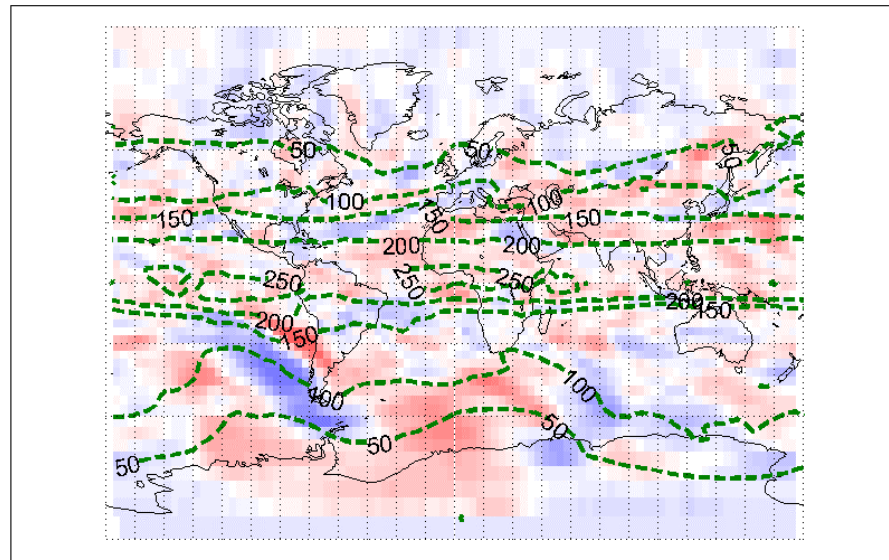


24 hr tendencies

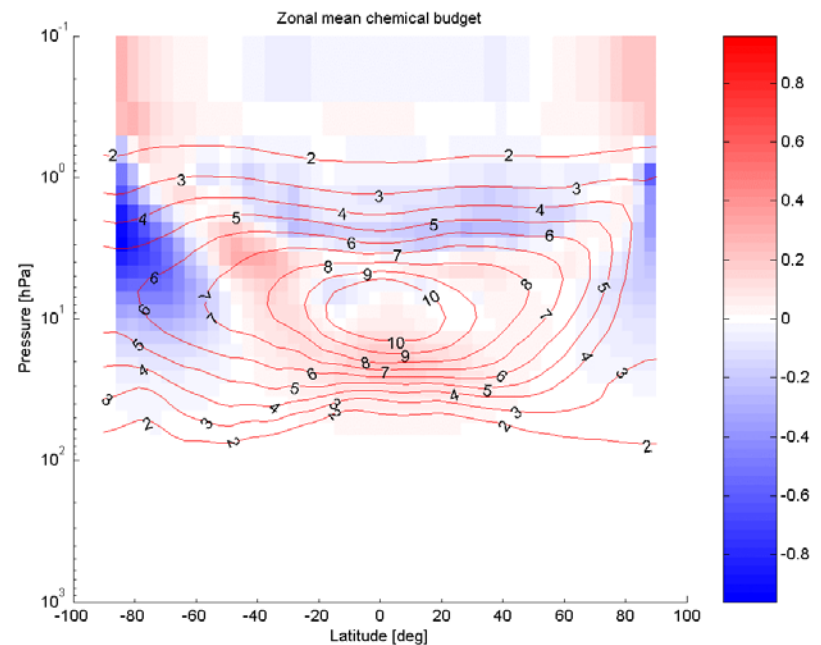
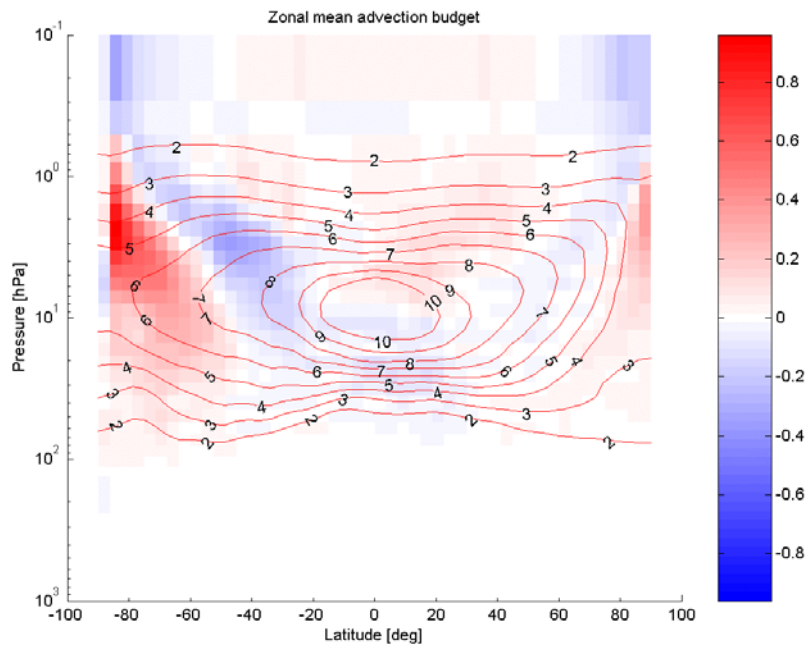


24 hr tendencies

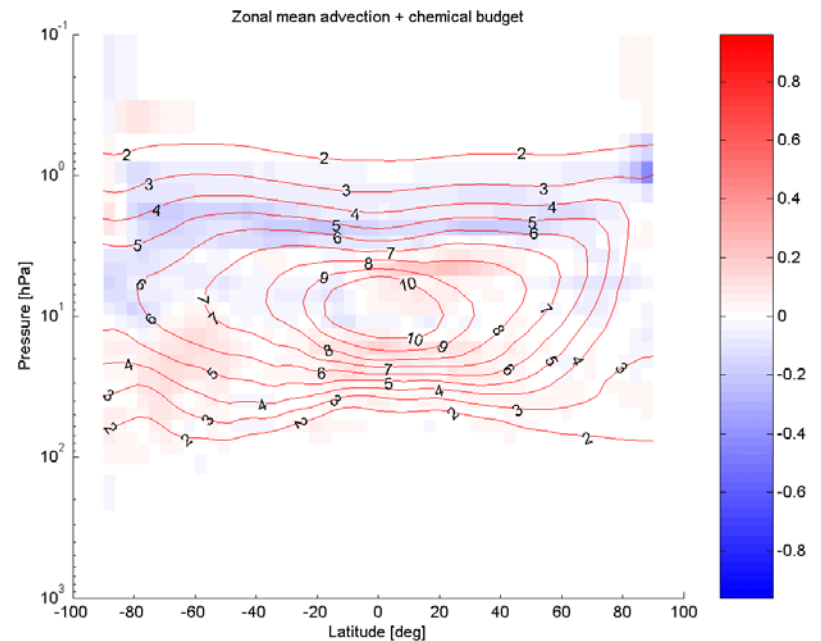
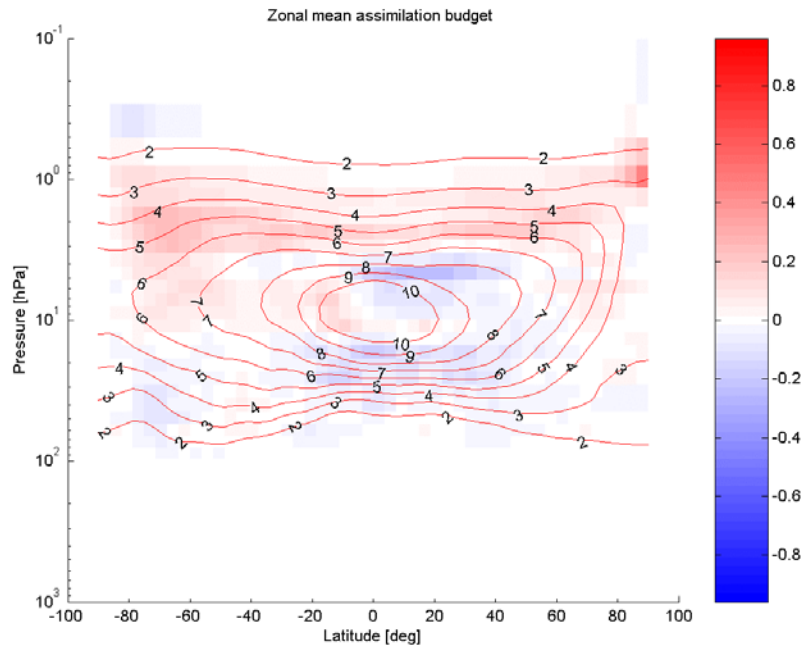
Sum of advection and assimilation 24hr budget @ 19 hPa



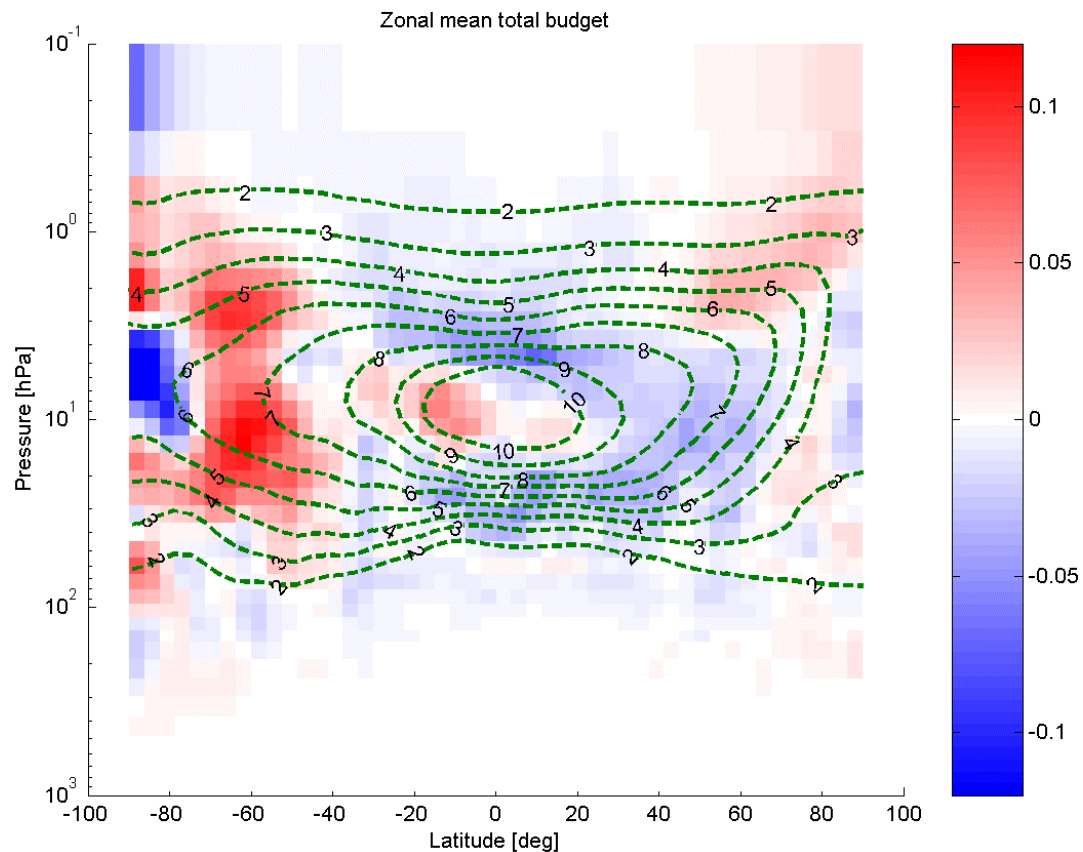
24 hr ozone tendencies



24 hr ozone tendencies



24 hr ozone tendencies



Anymore uncertainties