

The ENSO signal in atmospheric composition fields: Emission driven versus dynamically induced changes

A. Inness¹, A. Benedetti¹, J. Flemming¹,
M. Parrington¹, J.W. Kaiser², and S. Remy³

Research Department

March 2015

1) ECMWF, Reading, UK

2) Max-Planck-Institute for Chemistry, Mainz, Germany

3) Laboratoire de Météorologie Dynamique, Paris, France

This paper has not been published and should be regarded as an Internal Report from ECMWF.

Permission to quote from it should be obtained from the ECMWF.



European Centre for Medium-Range Weather Forecasts
Europäisches Zentrum für mittelfristige Wettervorhersage
Centre européen pour les prévisions météorologiques à moyen

Series: ECMWF Technical Memoranda

A full list of ECMWF Publications can be found on our web site under:

<http://www.ecmwf.int/publications/>

Contact: library@ecmwf.int

© Copyright 2015

European Centre for Medium Range Weather Forecasts

Shinfield Park, Reading, Berkshire RG2 9AX, England

Literary and scientific copyrights belong to ECMWF and are reserved in all countries. This publication is not to be reprinted or translated in whole or in part without the written permission of the Director. Appropriate non-commercial use will normally be granted under the condition that reference is made to ECMWF.

The information within this publication is given in good faith and considered to be true, but ECMWF accepts no liability for error, omission and for loss or damage arising from its use.

Abstract

The El Niño Southern Oscillation (ENSO) does not only affect meteorological fields but also has a large impact on atmospheric composition. Atmospheric composition fields from the Monitoring Atmospheric Composition and Climate (MACC) reanalysis are used to identify the ENSO signal in tropospheric ozone, carbon monoxide, nitrogen oxide and smoke aerosols, concentrating on the months October to December. During El Niño years all these fields have increased concentrations over Maritime South East Asia in October. The MACC Composition Integrated Forecasting System (C-IFS) model is used to quantify the relative magnitude of dynamically induced and emission driven changes in the atmospheric composition fields. While changes in tropospheric ozone are a combination of dynamically induced and emission driven changes, the changes in carbon monoxide, nitrogen oxide and smoke aerosols are almost entirely emission driven in the MACC model. The ozone changes continue into December, i.e. after the end of the Indonesian fire season while changes in the other fields are confined to the fire season.

1 Introduction

The El Niño Southern Oscillation (ENSO) is the dominant mode of variability in the Tropics (e.g. Allan et al. 1996). It does not only affect meteorological fields but has a large impact on atmospheric composition too, for example on ozone (O_3), carbon monoxide (CO), nitrogen Oxides (NO_x) and aerosols (e.g. Logan et al. 2008; Ziemke and Chandra, 2003, Chandra et al., 2002; Wang et al., 2004). As the result of an eastwards shift of the warm sea surface temperatures (SST) and the large scale Walker circulation anomaly in the tropical Pacific during El Niño years, downward motion is increased and convection and precipitation are reduced over the Western Pacific and the Maritime Continent. During La Niña conditions the opposite dynamical effects occur. Fire emissions over Indonesia show a large interannual variability (IAV), with largest emissions during El Niño years (e.g. van der Werf et al., 2006, Kaiser et al., 2012), when drought conditions and anthropogenic biomass burning lead to big wild fires (Duncan et al., 2003; Lyon et al., 2004; Page et al., 2002) that emit large amounts of trace gases and aerosols. During El Niño years tropospheric O_3 columns (TCO₃) are decreased over the Central and Eastern Pacific and increased over the Western Pacific and Indonesia, while CO concentrations and aerosols from biomass burning increase over Indonesia. Specific humidity changes in the upper troposphere are anti-correlated with the changes in TCO₃ (e.g. Chandra et al., 2007).

These atmospheric composition changes have been found in observations (Chandra et al., 1998; Ziemke and Chandra 1999; Fujiwara et al., 1999; Chandra et al., 2007; Logan et al., 2008) and were confirmed by modelling studies (Hauglustaine et al., 1999; Sudo and Takahashi, 2001; Chandra et al., 2002; Doherty et al., 2006; Chandra et al., 2009; Nassar et al., 2009) which also tried to quantify the relative importance of the dynamically induced and the emission driven atmospheric composition changes. The reasons for the TCO₃ increase over the Western Pacific and Indonesia during El Niño years are (i) changes in the vertical transport that lead to enhanced downward transport of O_3 rich air from the upper troposphere (and perhaps stratosphere) to the middle and lower troposphere, and reduced transport of O_3 poor air from the lower troposphere into the upper troposphere; (ii) a longer chemical lifetime of O_3 because of reduced humidity which affects the concentrations of the hydroxyl radical (OH) and hence the photochemical loss of tropospheric O_3 ; and (iii) enhanced photochemical production of O_3 in the lower troposphere because of increased concentrations of O_3 precursors from biomass burning, such as NO_x , CO or Hydrocarbons. We refer to (i) and (ii) as ‘dynamically induced changes’ and to (iii) as ‘emission driven changes’ throughout this paper.

For El Niño events with large fires over Indonesia, such as in 1997 and 2006, the TCO₃ changes due to dynamics and due to increased emissions can be of similar magnitude (Sudo and Takahashi, 2001; Chandra et al., 2002; Chandra et al., 2009), while for weaker events, such as the 2004 El Niño, the dynamical impact dominates (Chandra et al., 2007).

The changes in CO are mainly emissions driven (Logan et al., 2008; Chandra et al., 2009; Voulgarakis et al., 2010) and of smaller horizontal scale than the O₃ anomalies, but dynamical interactions due to changes in water vapour (H₂O) and hence OH can also play a role. CO is increased over the Western Pacific and the Maritime Continent during El Niño because of increased emissions from fires and the increased chemical lifetime due to reduced OH. The CO anomaly over Indonesia is usually gone by December (Logan et al., 2008; Chandra et al., 2009), after the end of the biomass burning season, while the O₃ anomaly continues.

Large Indonesian wildfires can affect the air quality over South East Asia. Aouizerats et al. (2015) investigated how the transport of biomass burning emissions from Sumatra affected the air quality in Singapore. They found that 21% of the PM₁₀ loading in Singapore during July to October 2006 was due to Sumatran fires, and that Sumatran fires were responsible for about half of the days with PM₁₀ concentrations greater than 50 µgm⁻³ while the other half was due to local anthropogenic pollution and contributions from smaller fires. The impact of fire emissions on atmospheric aerosol concentrations is of particular interest because of the potential feedbacks of fire-induced aerosols on climate. Several studies have looked at the correlations between ENSO and aerosols or atmospheric haze produced by the Indonesian fires. Wang et al. (2004) used visibility data over Sumatra as an indicator of biomass burning and found that haze events were strongly correlated with El Niño during the 1973 to 2003 period. Tosca et al. (2010) used satellite data and modelling studies and found that the aerosol optical depth (AOD) over Indonesia had a large IAV that was driven by wild fires during periods of El Niño induced droughts. Their modelling study showed that the fire-emitted aerosols could initiate a positive feedback loop. The aerosols acted to intensify drought over the biomass burning regions. The aerosols also reduced land and sea surface temperatures, and hence suppressed convection and precipitation in the area. Podgorny et al. (2003) looked at the feedback between El Niño and the Indonesian biomass burning of 1997 and also found that the haze from the fires reduced the solar radiation absorbed by the equatorial Indian Ocean and increased the solar heating of the atmosphere, thus raising the possibility of dynamical feedbacks of the smoke forcing on ENSO. Chung and Ramanathan (2003) carried out modelling studies to assess the remote impact of changes in the South Asian haze and found that fluctuations in the absorbing aerosol forcing could affect the interannual climate variability in the Tropics (and Extratropics). It could remotely suppress convection in the equatorial western Pacific and lead to an ocean-atmosphere response that was very similar to El Niño like warming.

As part of the EU FP7 funded Monitoring Atmospheric Composition and Climate (MACC) project (www.copernicus-atmosphere.eu) a 10-year reanalysis of atmospheric composition (Inness et al. 2013) was constructed. This reanalysis provides fields of chemically active gases, for example CO, O₃, and NO_x, as well as aerosols globally for both the troposphere and the stratosphere for the years 2003 to 2012. It gives us the unprecedented possibility to assess the impact of ENSO on atmospheric composition using an observationally constrained,

continuous, 3-dimensional atmospheric composition dataset with a resolution of about 80 km, which is greater than the resolutions used in most previous modelling studies. In this paper we show that the MACC reanalysis shows the ENSO induced anomalies in O₃, CO, NO_x and aerosols described in earlier studies. We then use MACC's Composition Integrated Forecasting System (C-IFS) model (Flemming et al. 2014) to quantify the relative impact of the dynamics and the biomass burning emissions on the ENSO signal in the O₃, CO, NO_x and smoke aerosol fields.

This paper is structured in the following way. Section 2 describes the MACC reanalysis and the ENSO signal seen in MACC O₃, CO, NO_x and smoke aerosol fields. Section 3 describes the additional C-IFS model runs that were carried out to quantify the relative impact of the dynamics and biomass burning emission on the ENSO signal in the atmospheric composition fields and their results, and Section 4 presents conclusions and outlook.

2 ENSO signal in the MACC reanalysis

2.1 The MACC reanalysis

The MACC data assimilation system provides analyses and forecasts of atmospheric composition and was used to produce a reanalysis of atmospheric composition covering the years 2003 to 2012, as described in Inness et al. (2013). O₃ retrievals from several instruments (including the Ozone Monitoring Instrument (OMI), SCanning Imaging Absorption spectroMeter for Atmospheric CHartography (SCIAMCHY), Solar Backscatter ULTra-Violet (SBUV/2), Microwave Limb Sounder (MLS)), CO retrievals from Measurements of Pollution in the Troposphere (MOPITT) and Infrared Atmospheric Sounding Interferometer (IASI), tropospheric NO₂ columns from SCIAMACHY, and AOD from Moderate Resolution Imaging Spectroradiometer (MODIS) were assimilated to constrain the atmospheric compositions fields. For more information about the assimilated datasets and the quality of the O₃, CO, and NO_x fields produced by the analysis see Inness et al. (2013). The aerosol analysis in the MACC reanalysis is similar to that described in Benedetti et al. (2009) and Morcrette et al. (2011) and is based on 4-dimensional variational assimilation of AOD observations at 550 nm from the MODIS sensors, including a global adaptive bias correction. Comparisons of multiyear averages of AOD over the period 2003–2010 from the MACC reanalysis and from the Multi-angle Imaging SpectroRadiometer (MISR) sensors onboard the Terra satellite indicate good qualitative agreement (not shown).

The anthropogenic emissions for the reactive gases for the MACC reanalysis were taken from the MACCity inventory (Granier et al., 2011) which accounts for projected trends in the emissions. For the aerosol fields they came from the EDGAR database (Dentener et al., 2006). Monthly biomass burning emission for the years 2003 to 2008 from the GFED3.0

inventory (van der Werf et al., 2010) were scaled to daily resolution using MODIS active fire observations. From 2009 to 2012 daily biomass burning emissions from MACC's GFAS, Version 1.0 (Kaiser et al. 2012) were used. One advantage of the MACC reanalysis is that it used daily fire emission, in contrast to several other studies that used monthly averages. Biogenic emissions used in the MACC reanalysis were for 2003. They came from a recent update (Barkley, 2010) of the Model of Emissions of Gases and Aerosols from Nature version 2 (MEGAN2; Guenther et al. 2006, <http://acd.ucar.edu/~guenther/MEGAN/MEGAN.htm>) and were used as monthly surface flux fields without interannual variation.

Initial validation results from the MACC reanalysis are shown in Inness et al. (2013) and Morcrette et al. (2011) and more detailed validation can be found in the MACC reanalysis validation reports available from http://atmosphere.copernicus.eu/services/aqac/global_verification/validation_reports/.

2.2 ENSO anomalies

The MACC reanalysis was used to construct monthly composites of O₃, CO, NO_x fields at 500 hPa and of the smoke AOD, i.e. the sum of black carbon (BC) and organic matter (OM) AOD, at 550 nm for El Niño and La Niña years for the months October, November and December. The El Niño composite was constructed from the years 2004, 2006, 2009, the La Niña composite from the years 2005, 2007, 2008, 2010, and 2011. Weak El Niño and La Niña years were included in the composite calculation to increase the sample size. A recent timeseries of the Multivariate ENSO index which was used to define the years used in our El Niño and La Niña composites can be found on <http://www.esrl.noaa.gov/psd/enso/mei/index.html>. SST and precipitation composite fields, that were not available from the MACC reanalysis, were constructed for the same years from the ERA Interim reanalysis (Dee et al. 2011), and biomass burning composites were calculated from the GFAS v1.0 data set. The composites were then used to calculate anomalies for the various fields by taking the difference between the El Niño and La Niña composites for the months October, November and December.

Figure 1 shows the warm SST anomaly over the Central Pacific associated with El Niño conditions and the resulting precipitation changes for October, November and December from ERA Interim. Precipitation is increased over the central Pacific and reduced over the Western Pacific, Maritime Continent, northern Australia and part of the Indian Ocean. The increased biomass burning emissions related to the lack of rainfall over Indonesia and Northern Australia can be seen in the FRP anomalies shown in Figure 2. Increased fire activity can be seen over Indonesia in October and November, but has stopped by December after the end of the fire season, while a weaker biomass burning anomaly continues in Northern Australia into December. Over Brazil decreased fire activity can be seen in October.

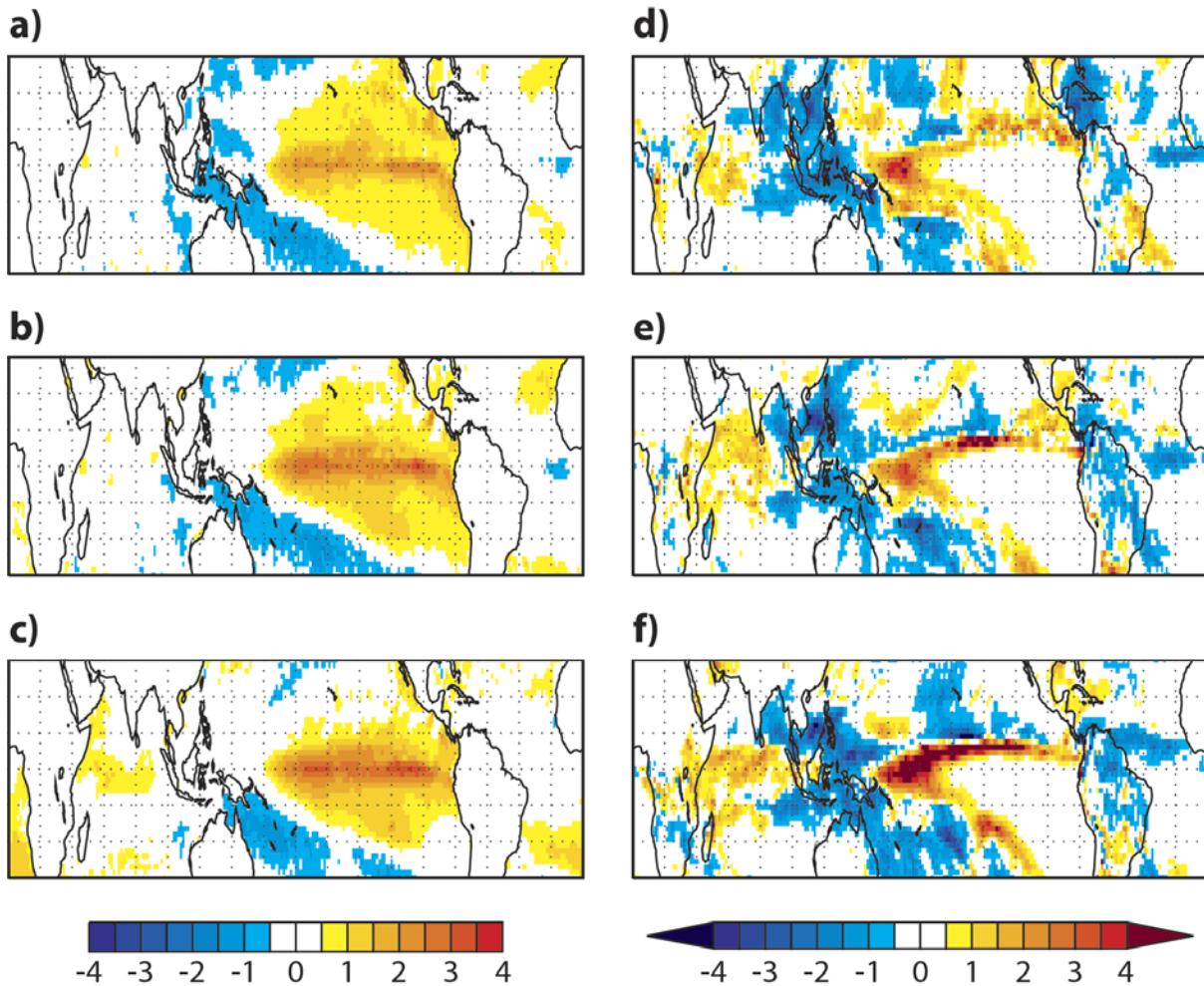


Figure 1: Left panels: SST anomaly in K calculated from ERA Interim as the difference of El Niño composite minus La Niña composite for October (a), November (b) and December (c). Right panels: Precipitation anomaly in mm/day calculated from ERA Interim as the difference of El Niño composite minus La Niña composite for October (d), November (e) and December (f). Red colours indicate positive values, blue colours negative values.

Figure 3 shows the IAV of the biomass burning emissions for CO from GFAS v1.0 for the 10 years covered by the MACC reanalysis for the area around Indonesia (10°N and 10°S, 90°E and 130°E) and illustrates that the emissions are higher during the El Niño years 2004, 2006, 2009 than at other times. The largest values are seen for 2006. Table 1 shows the average CO, NO_x and fire aerosol emissions from GFAS v1.0 during October, November, December for the El Niño years and La Niña years. The average CO emissions during El Niño years during October, November, and December are a factor of about 9, 12, and 2 larger, respectively, than during La Niña years. For NO_x fire emissions the factors are 6, 7, 2 and for smoke aerosols 8, 10, 2, respectively. The values in Table 1 are slightly smaller than the values in Chandra et al. (2009) who list CO fire emissions over Indonesia as 44.2 Tg/month, 6.3 Tg/month and 0.2 Tg/months and NO₂ fire emissions of 0.76, 0.11, and 0.0 for October, November, and December 2006 respectively.

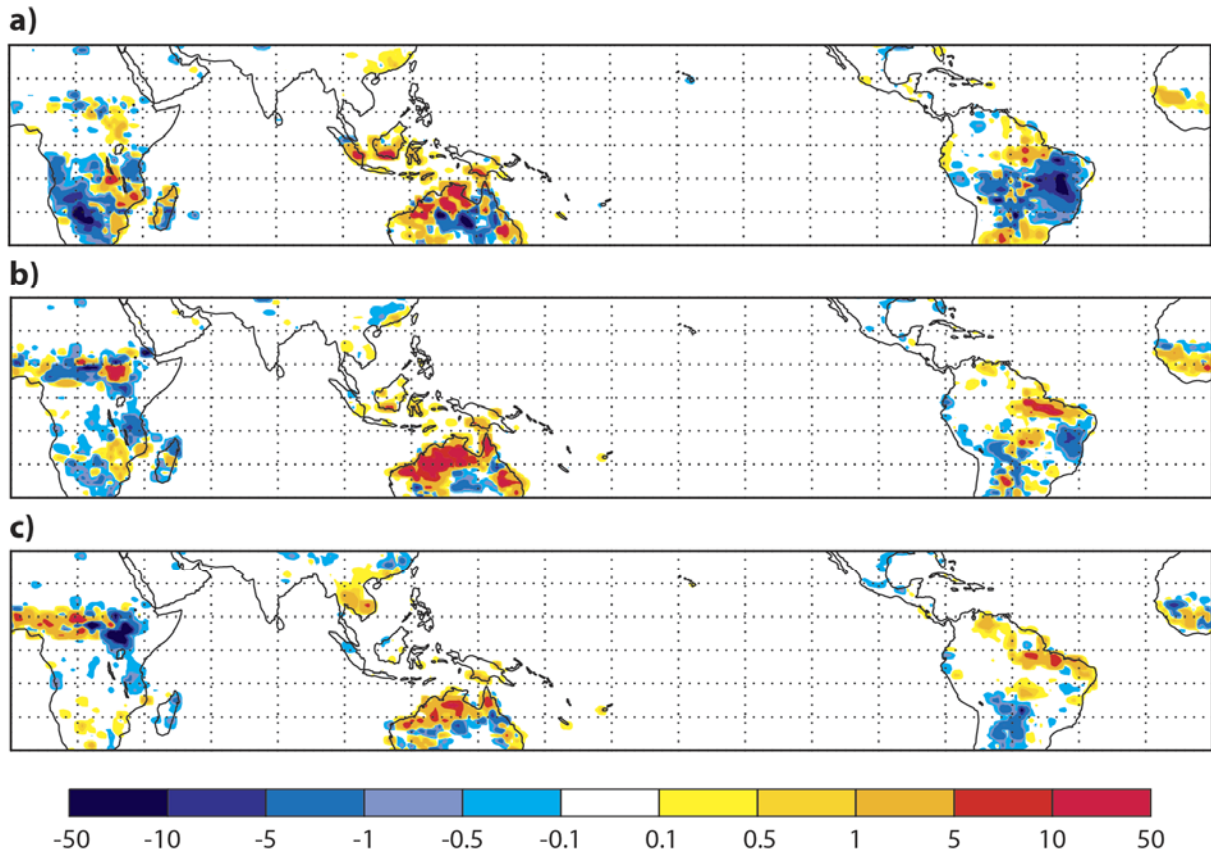


Figure 2: Biomass burning (fire radiative power areal density) anomaly in mW/m^2 calculated from the GFAS v1.0 dataset as the difference of El Niño composite minus La Niña composite for October (a), November (b) and December (c). Red colours indicate positive values, blue colours negative values.

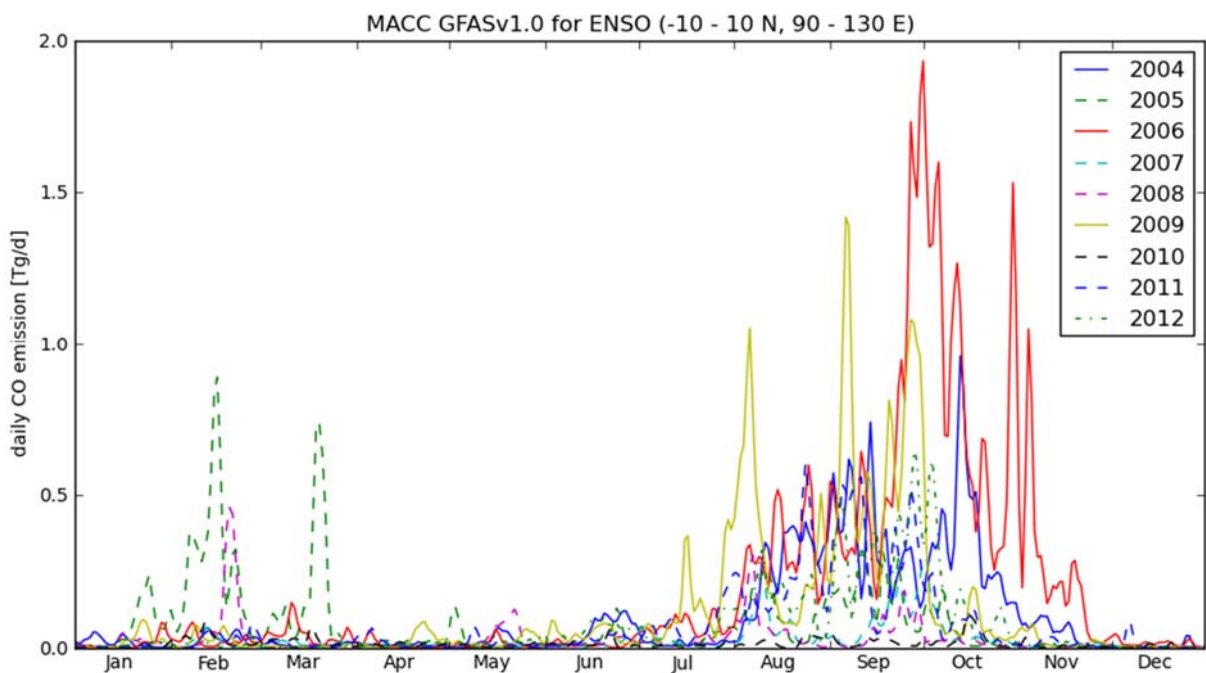


Figure 3: Timeseries of daily CO emissions in Tg ($10^{12}g$) per day from GFASv1.0 for the region $10^{\circ}N - 10^{\circ}S, 90^{\circ}E - 130^{\circ}E$ for the years 2003 to 2012.

	CO Oct	CO Nov	CO Dec	NO_x Oct	NO_x Nov	NO_x Dec	OM+BC Oct	OM+BC Nov	OM+BC Dec
El Niño	13.9	3.0	$2.4 \cdot 10^{-1}$	$8.4 \cdot 10^{-2}$	$1.9 \cdot 10^{-2}$	$2.8 \cdot 10^{-3}$	$6.3 \cdot 10^{-1}$	$1.4 \cdot 10^{-1}$	$1.3 \cdot 10^{-2}$
La Niña	1.5	$2.5 \cdot 10^{-1}$	$1.4 \cdot 10^{-1}$	$1.4 \cdot 10^{-2}$	$3.0 \cdot 10^{-3}$	$1.5 \cdot 10^{-3}$	$7.3 \cdot 10^{-2}$	$1.4 \cdot 10^{-2}$	$7.3 \cdot 10^{-3}$
El Niño/ La Niña	9.5	11.8	1.7	6.1	6.3	1.9	8.6	10.0	1.8

Table 1: Biomass burning emissions in Tg per month for CO, NO_x, and the smoke aerosols (sum of organic matter and black carbon) from GFAS v1.0 for the region 10°N - 10°S, 90°E - 130°E averaged over the El Niño years (2004, 2006, 2009) and the La Niña years (2005, 2007, 2008, 2010, 2011), as well as the ratio of the El Niño/La Niña values.

Figures 4 to 7 illustrate the impact that the dynamical and emission related changes have on the atmospheric composition fields, by showing the anomalies calculated from the MACC reanalysis at 500 hPa for O₃, CO, NO_x, and smoke AOD, respectively. O₃ shows positive anomalies over the Western Pacific, Indonesia, Northern Australia and the Eastern Indian Ocean, and negative anomalies over the Central and Eastern Pacific (Figure 4). These anomalies are quite large scale and continue into December after the end of the biomass burning anomaly over Indonesia. The O₃ anomalies agree well with those described in other studies based on MLS and TOMS data (Chandra et al. 2009) as well as TES data (Logan et al. 2008). The negative O₃ anomaly over Africa and the western Indian Ocean in December was also noted by Nassar et al. (2009) in TES data and modelling studies with the GEOS-Chem model, and we also note a negative O₃ anomaly over Brazil in October. The O₃ anomalies are a combination of biomass burning changes and meteorological changes as a consequence of changes in SSTs and the resulting eastward shift of the Walker circulation (Sudo and Takahashi 2001; Chandra et al. 2002; Chandra et al. 2009). The O₃ decrease over the Central and East Pacific is due to enhanced upward transport of O₃ poor air from the boundary layer into the middle and upper troposphere, and a shorter O₃ lifetime and larger photochemical loss due to increased H₂O (and hence OH) concentrations.

During October and November both dynamical and emission driven effects contribute, and modelling studies (e.g. Sudo and Takahashi 2001; Chandra et al. 2002; Chandra et al. 2009) have shown that emissions and dynamical changes can contribute equally for El Niño years with strong biomass burning. The O₃ changes in December are due to the dynamical changes after the end of the fire season over Indonesia. This agrees with what was seen by Logan et al. (2008), Chandra et al. (2009) and Nassar et al (2009).

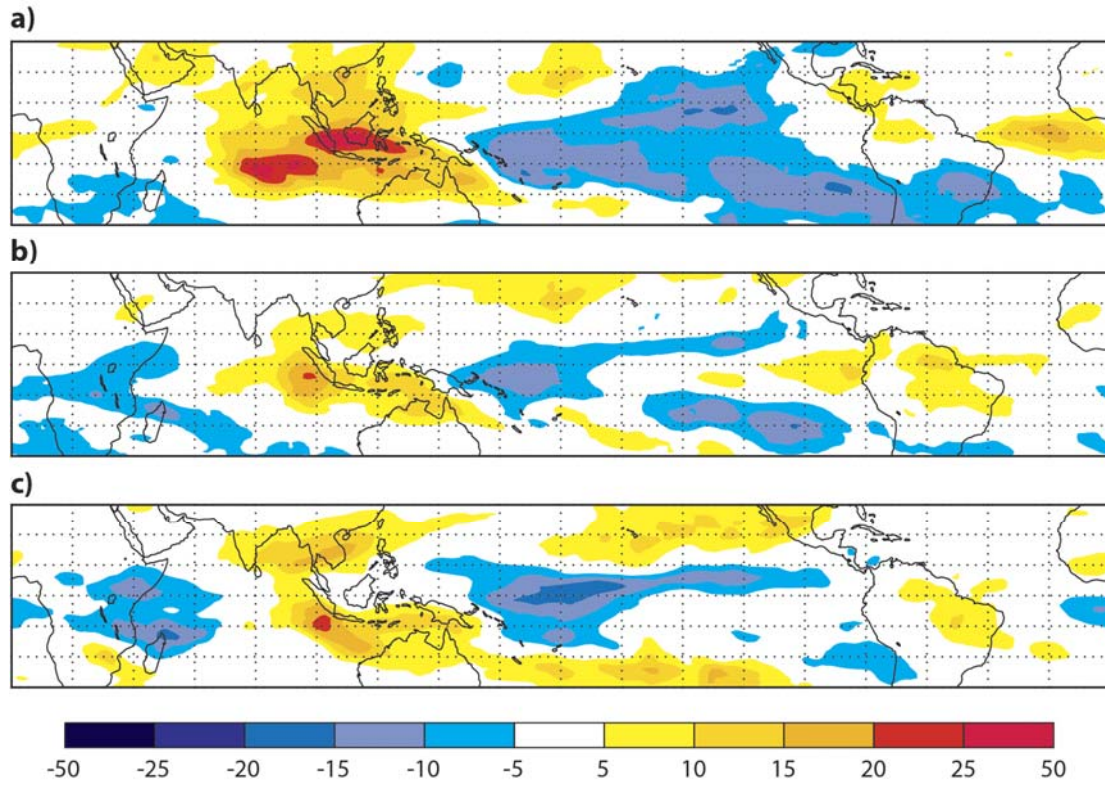


Figure 4: O₃ anomaly at 500 hPa in ppb calculated from the MACC reanalysis as the difference of El Niño composite minus La Niña composite for October (a), November (b) and December (c). Red colours indicate positive values, blue colours negative values.

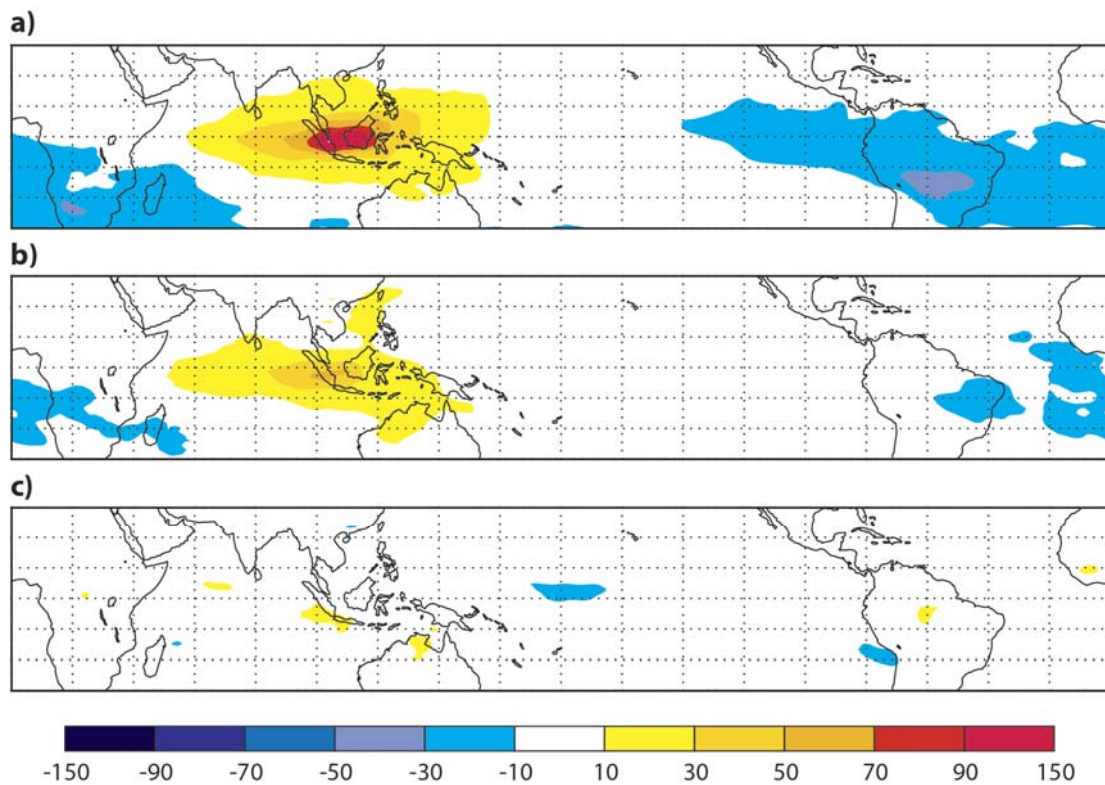


Figure 5: Like Figure 4 but for CO anomaly at 500 hPa in ppb.

Figure 5 shows the CO anomalies at 500 hPa calculated from the MACC reanalysis. These anomalies are more confined to the areas of the biomass burning anomalies (see Figure 2) than the O₃ anomalies (Figure 4). The strongest positive anomaly is found over the Maritime Continent during October and is linked to increased emissions from enhanced biomass burning under drought conditions. A negative CO anomaly extends from South America over the Southern Atlantic to Africa in October and is related to lower fire emissions over Brazil. Similar anomalies were described by Logan et al. (2008), Nassar et al. (2009) and Chandra et al. (2009). The CO anomalies during November are weaker than the October ones, and by December the anomalies have all but disappeared. This confirms that the CO anomalies are mainly emission driven and are not affected much by the dynamical changes that cause the O₃ anomalies after the end of the biomass burning season in December.

The NO_x anomalies (Figure 6) clearly show the impact of the increased emissions from biomass burning over Indonesia during October and November, but also seem to indicate some large scale response. For example, the negative anomaly over the Eastern Pacific is collocated with the negative O₃ anomaly here (Figure 4) and could indicate enhanced upward transport of NO_x poor air to these levels. Also the negative NO_x anomaly over the Pacific in December is again co-located with a (larger) negative O₃ anomaly.

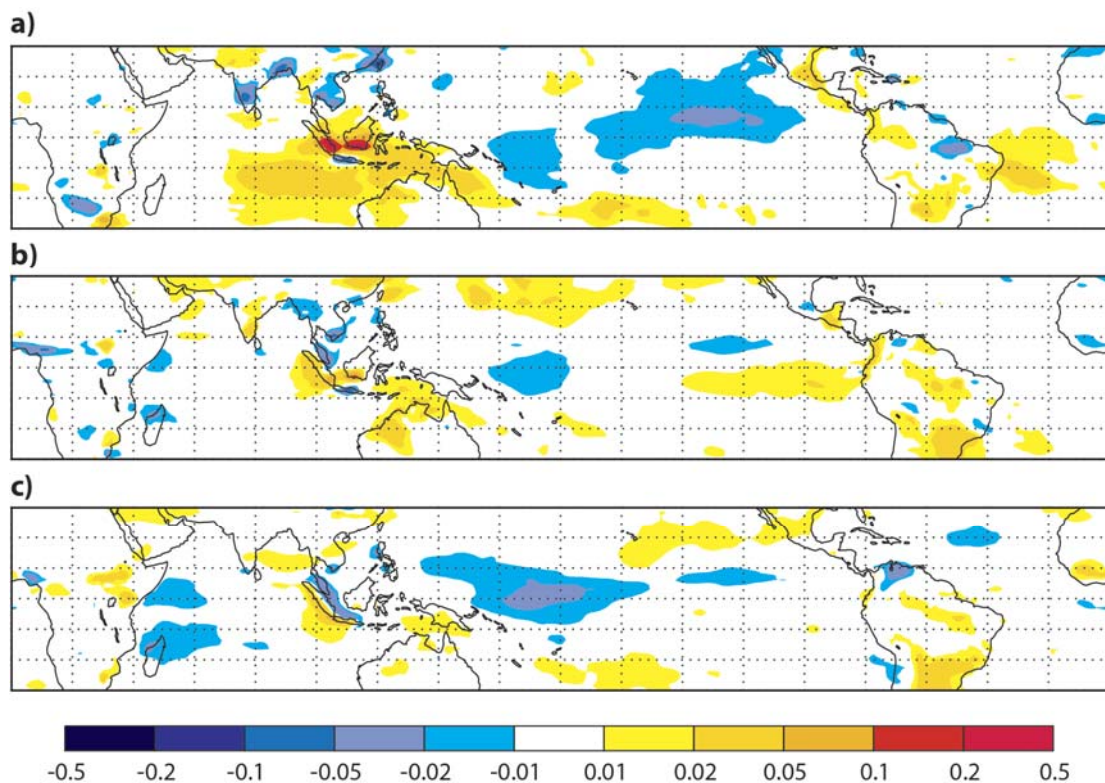


Figure 6: Like Figure 4 but for NO_x anomaly in ppb.

Figure 7 shows the anomaly of smoke AOD at 550 nm calculated from the MACC reanalysis. The largest positive anomaly is found over Indonesia in October and November,

corresponding to increased aerosol concentrations from biomass burning emissions. The negative aerosol anomaly over South America in October is related to the reduced fire activity seen in Figure 2. By December the anomalies have disappeared. Similar AOD anomaly patterns over Indonesia were seen by Tosca et al. (2010) when comparing EL Niño and La Niña years for August to October for the period 2000 and 2006 from the MISR and MODIS data.

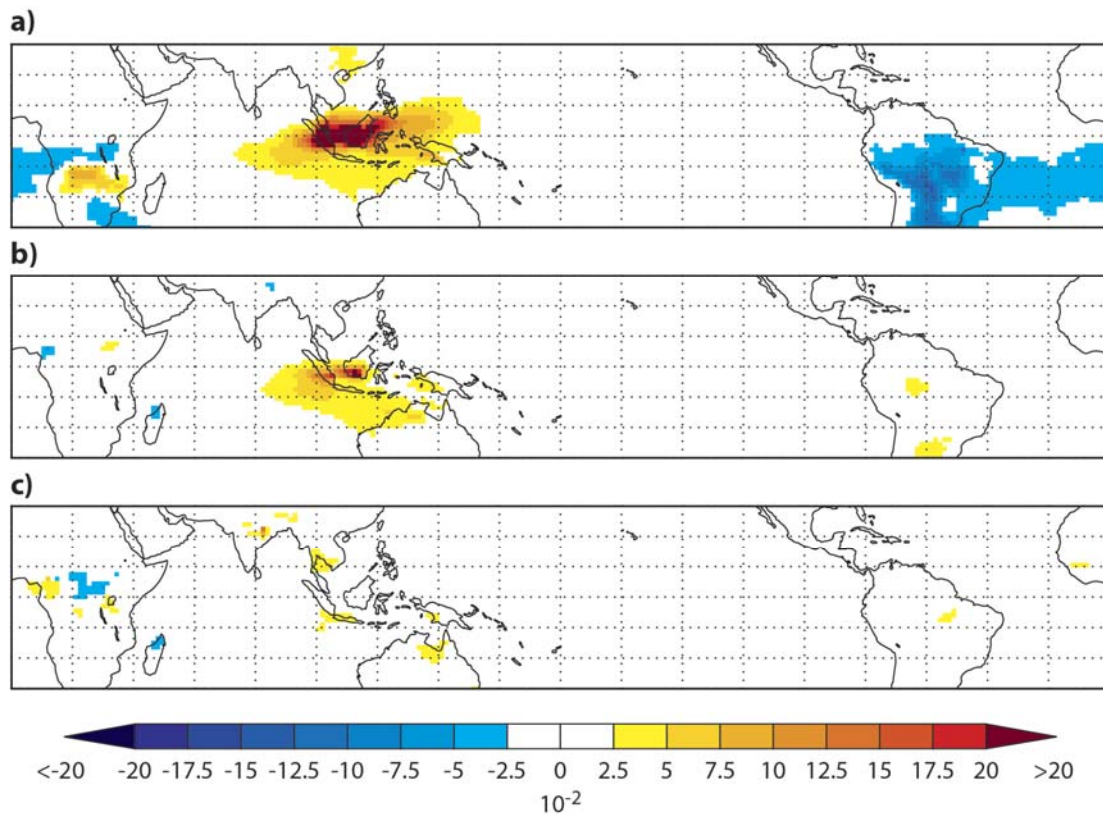


Figure 7: Like Figure 4 but for smoke AOD (BC+OM). AOD is unitless.

The 3-dimensional nature of the MACC reanalysis allows us to look at the vertical distribution of the anomalies in the troposphere. Figures 8 to 11 show height versus longitude cross-sections of O_3 , CO, NO_x and smoke AOD anomalies averaged over the latitude range from 0 to 12°S. The O_3 cross section in Figure 8 illustrates that the largest positive O_3 anomalies in October and November are located in the lower troposphere and are likely to be the result of enhanced O_3 production due to increased concentrations of O_3 precursors from enhanced fire emissions. However, the positive and negative anomalies extend into the upper the troposphere, and some of the anomalies (for example the negative anomaly over the Central Pacific) are clearly not connected to the surface but seem to originate in the middle or upper troposphere. These anomalies continue into December after the end of the fire season, and are likely to be a result of the dynamically induced changes mentioned above.

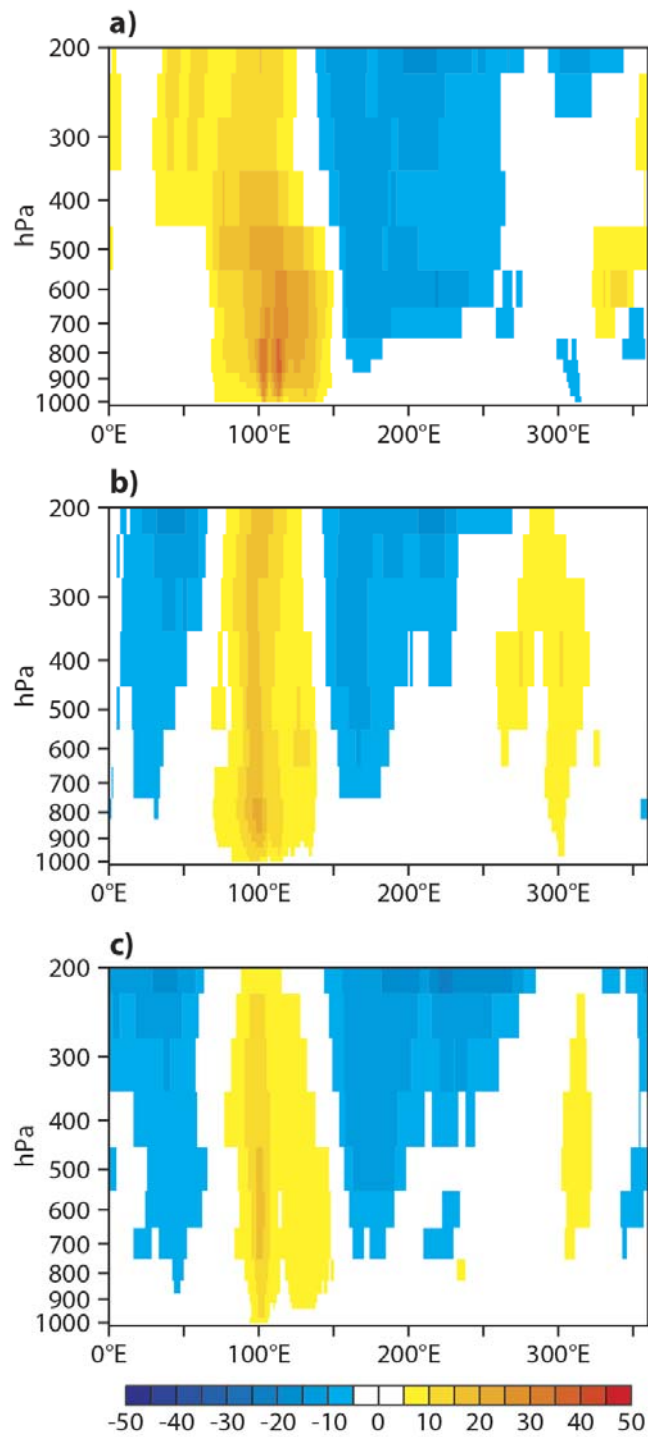


Figure 8: Vertical cross section of O_3 anomalies in ppb plotted against longitude and averaged between 0° and $12^\circ S$ calculated from the MACC reanalysis as the difference of El Niño composite minus La Niña composite for October (a), November (b) and December (c). Red colours indicate positive values, blue colours negative values.

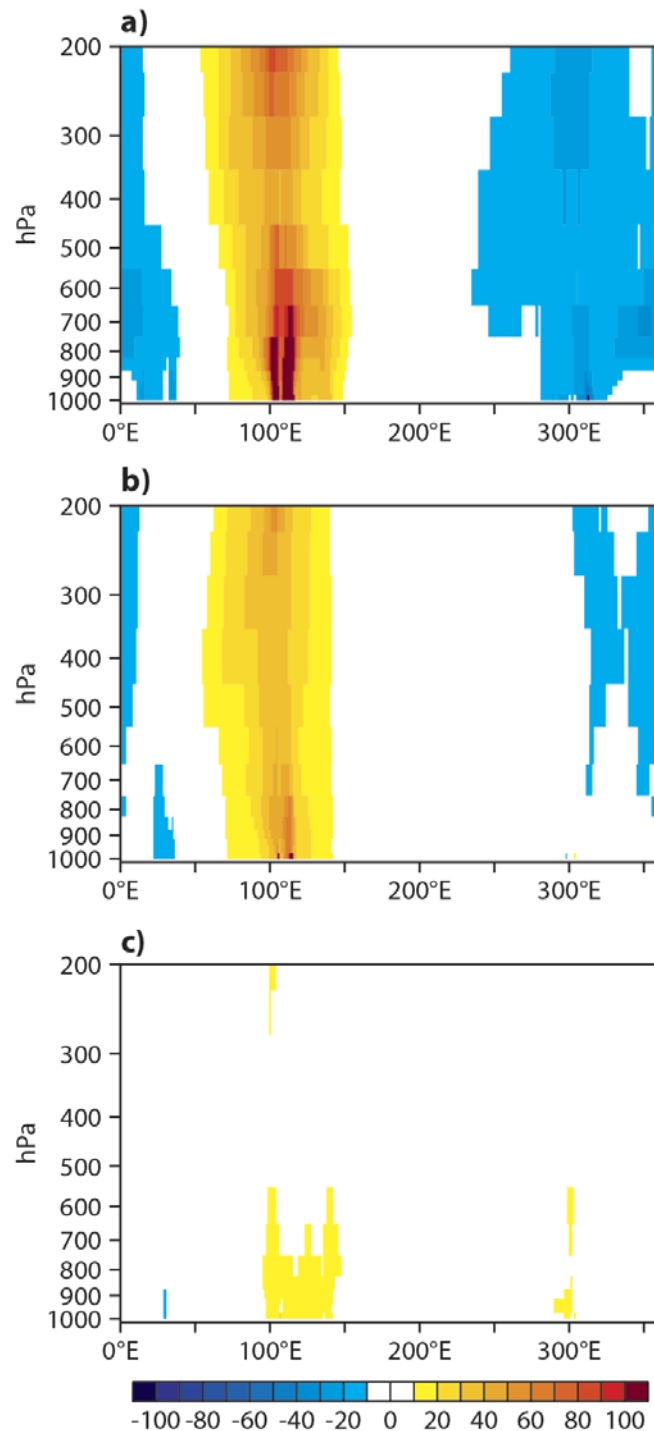


Figure 9: Like Figure 8 but for CO in ppb.

Figure 9 shows that CO anomalies are largest in the lower troposphere but can extend throughout the troposphere over Indonesia and South America. There is a clear connection to increased CO emissions over Indonesia and decreased emissions over South America due to changes in biomass burning. By December the anomalies have all but gone and show that there is no dynamically induced anomaly, unlike in O_3 . Now a positive anomaly is found over Africa.

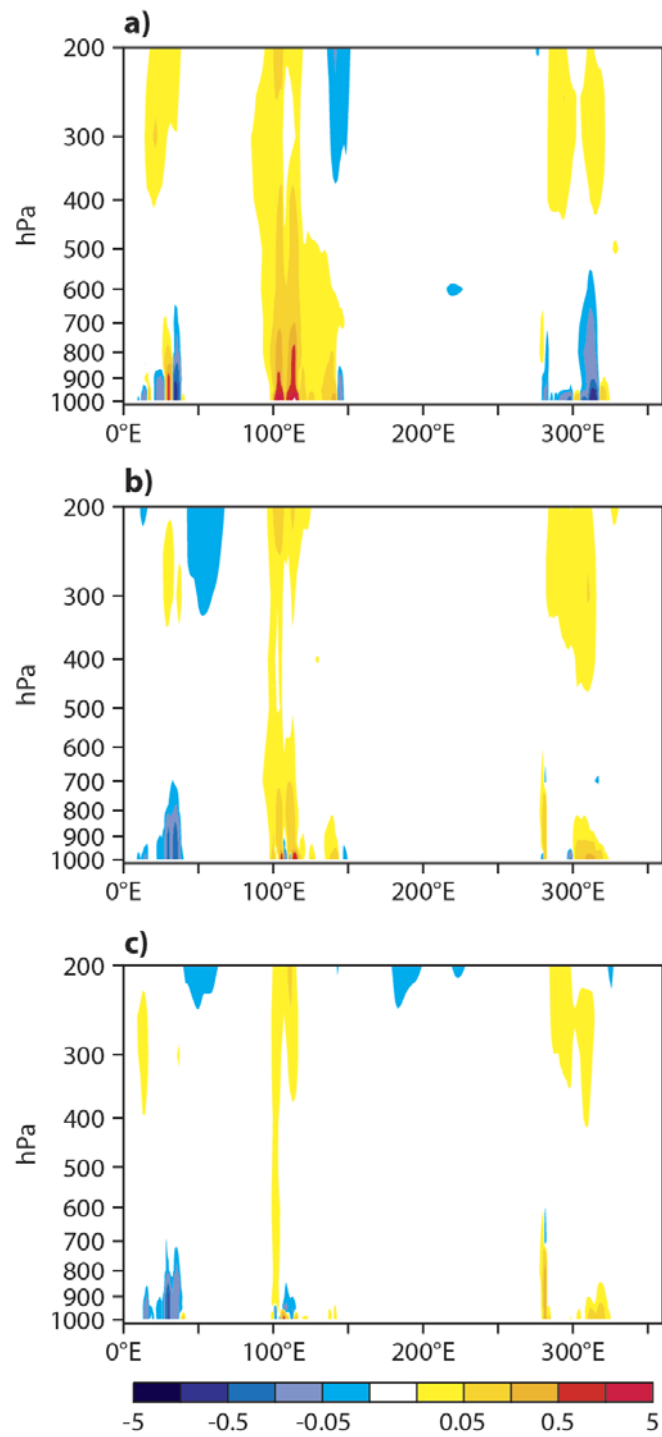


Figure 10: Like Figure 8 but for NOx in ppb.

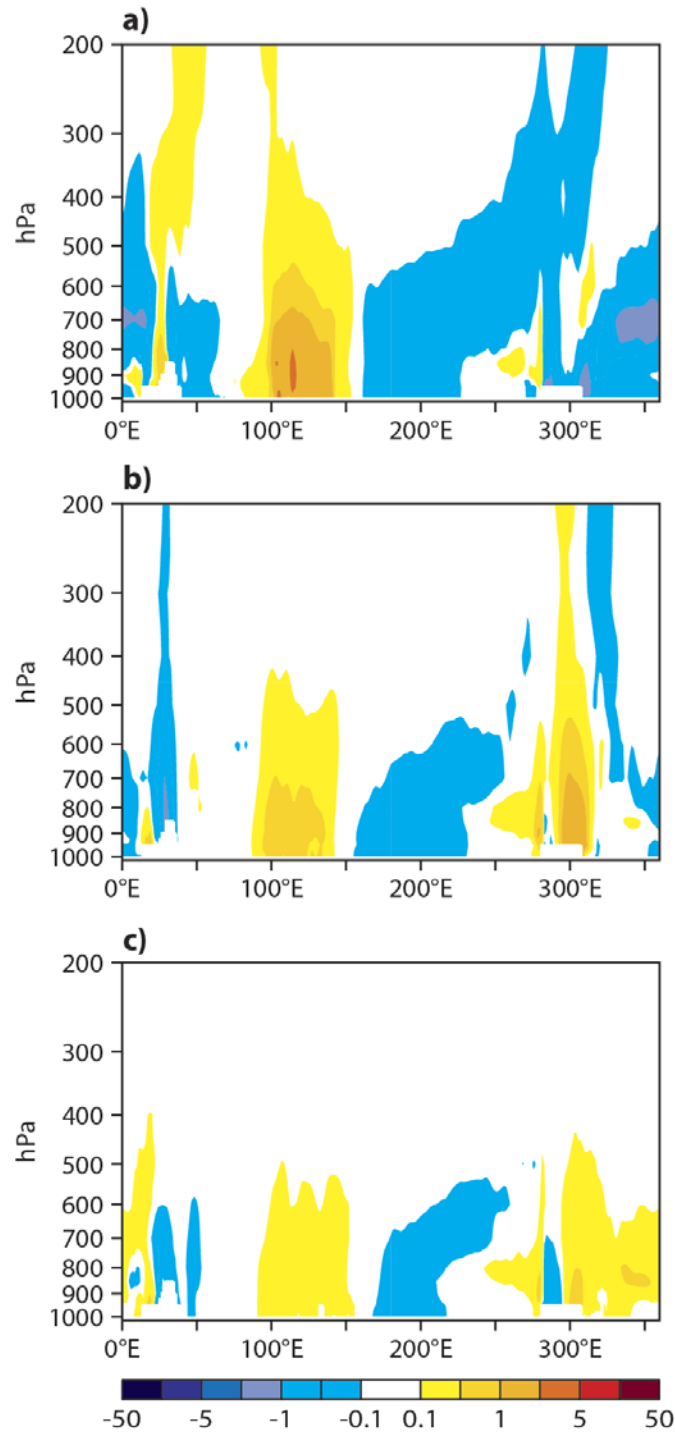


Figure 11: Like Figure 8 but for smoke aerosol in ppb.

Figure 10 shows cross sections of NO_x anomalies calculated from the reanalysis. The largest anomalies are located in the lower troposphere and are again clearly connected to changes in the fire emissions. A large positive anomaly is found over Indonesia and negative anomalies over South America in October and Africa in October and November. In these areas there are reduced fire activities and increased precipitation during El Niño years. Positive NO_x anomalies are found in the upper troposphere and could be a result of increased NO_x

production from lightning over South America where there is positive precipitation anomaly pointing to increased convection. The flash rates in the lightning NO parametrization are 5-10 larger over land than over ocean which might explain why no signal is seen over the Central Pacific.

Figure 11 depicts cross section of smoke AOD and shows that, as for CO and NO_x, there is a clear connection to increased emissions over Indonesia in October and reduced emissions over South America. By December the positive anomaly over Indonesia is much reduced and confined to the lower troposphere. Enhanced AOD concentrations can be seen in November over South America.

3 Quantifying the relative importance of dynamically and emission driven changes on the atmospheric composition fields

3.1 Experiment setup

To quantify the relative impact of increased biomass burning emissions and dynamically induced changes on the atmospheric composition fields during El Niño conditions two experiments are run for the years 2005 and 2006: one with normal and one with climatological GFAS v1.0 fire emissions. 2006 was an El Niño year, and 2005 is used to represent normal to weak La Niña conditions. The additional experiments use the most recent version of the MACC system, the C-IFS model (Flemming et al. 2014). This model is different to the one used in the MACC reanalysis (Inness et al. 2013) because it has chemistry routines included directly in ECMWF's Integrated Forecasting System (IFS).

The chemistry scheme implemented in the C-IFS model version used for these experiments is an extended, modified version of the Carbon Bond Mechanism 5 (Yarwood et al., 2005) chemical mechanism as originally implemented in the Tracer Model 5 (TM5) CTM (Huijnen et al., 2010, Williams et al., 2013; Huijnen et al., 2014). This is a tropospheric chemistry scheme with 54 species and 126 reactions. For O₃ a simple stratospheric parameterisation based on Cariolle and Teyssèdre (2007) has been added. Monthly mean dry deposition velocities are currently based on climatological fields from MOCAGE (Michou et al., 2004). The module for wet deposition is based on the Harvard wet deposition scheme (Jacob et al., 2000 and Liu et al., 2001). The output of the IFS convection scheme is used to calculate NO emissions from lightning. They are parameterised using estimates of the flash rate density, the flash energy release and the vertical emission profile. Estimates of the flash rate density are based on parameters of the convection scheme and calculated using convective precipitation as input parameter (Meijer et al 2001). Documentation of the technical implementation of C-IFS and more details about the model can be found in Flemming et al. (2014). In the present study, the C-IFS aerosol fields are not used in the radiation scheme, where an aerosol

climatology based on Tegen et al. (1997) is used instead. Also, heterogeneous chemistry on aerosols is not included.

The anthropogenic emissions used in the C-IFS runs come from the MACCity emission data base (Granier et al., 2011). Biogenic emissions are taken from the POET database for the year 2000 (Granier et al. 2005; Olivier et al. 2003), with isoprene emissions from MEGAN2.1, again for the year 2000 (Guenther et al., 2006). Biomass burning emissions for the runs are either taken from GFAS v1.0 (Kaiser et al. 2012) or from a GFAS v1.0 climatology. This daily climatology was constructed using the GFAS v1.0 dataset from 2000 to 2014 (Kaiser et al. 2012, Remy and Kaiser, 2014). Biomass burning emissions for each day of the year were defined as the average of the emissions of the same day of the year for the 15 years of the dataset.

The differences between the GFAS v1.0 and climatological GFAS emissions for the area between 10°N, 10°S, 90°E, 130°E are shown in Figure 12. The figure illustrates that 2006 was a year with exceptionally large biomass burning emissions over Indonesia during the biomass burning season (as already seen in Figure 4), while in 2005 emissions were slightly below average.

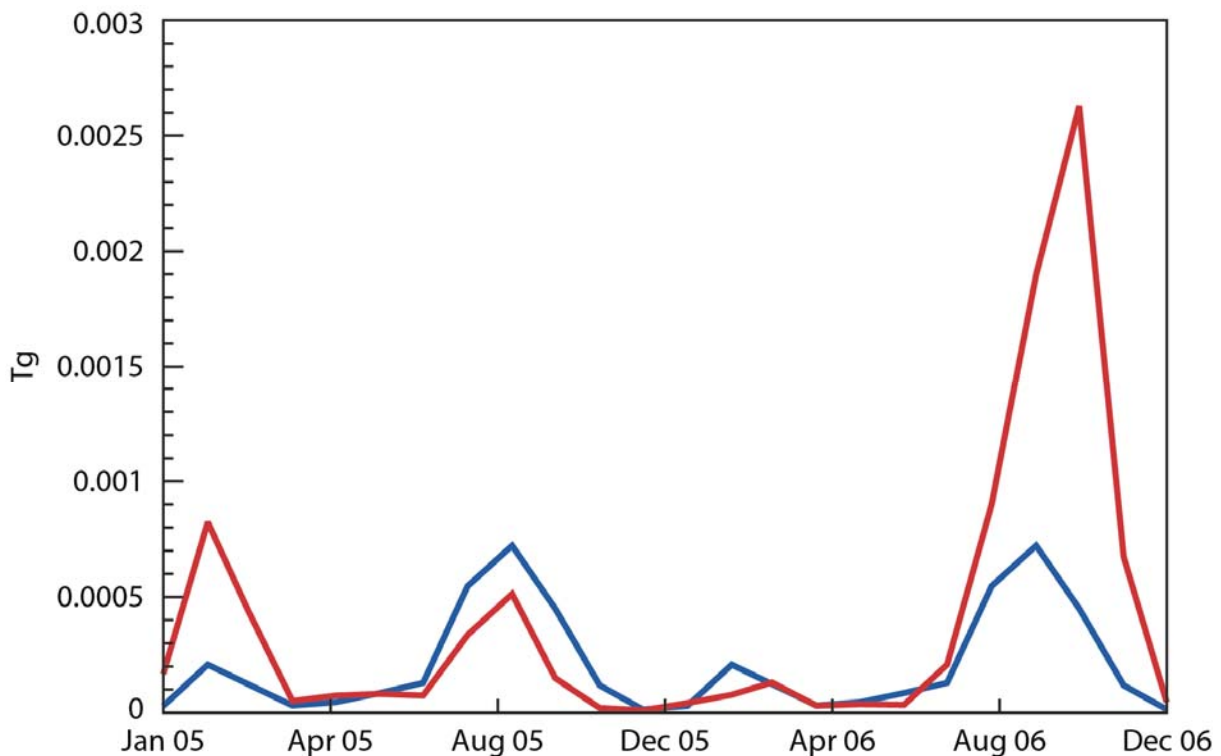


Figure 12: Timeseries of CO biomass burning emissions in Tg averaged over the region between 10°N, 10°S, 90°E, 130°E from GFAS v1.0 (red) and climatological GFAS v1.0 data set (blue.)

The experiments are started on 1 January 2005 and run until the end of 2006. The first experiment (BASE) uses daily GFAS v1.0 emissions, while the second experiment (CLIM)

uses the climatological GFAS data set described above. We look at fields from these experiments for October and December 2005 and 2006 to determine

- i. the overall impact of changes to the atmospheric composition fields due to El Niño related dynamically and emission induced changes by comparing BASE for the years 2006 and 2005 (BASE06 minus BASE05),
- ii. changes of atmospheric composition due to differences in the biomass burning emissions under El Niño conditions by comparing BASE and CLIM for 2006 (BASE06 minus CLIM06),
- iii. the impact of the El Niño induced dynamical changes on atmospheric composition and O₃ production by comparing CLIM for the years 2006 and 2005 (CLIM06 minus CLIM05).

3.2 Results of the C-IFS experiments

Figure 13 shows timeseries of the tropospheric CO, O₃ and NO₂ burdens from the BASE and CLIM experiments averaged over the area between 10°N, 10°S, 90°E, 130°E. Between September and November 2006 the GFAS v1.0 fire emissions used in BASE lead to an increased CO burden, which reaches values up to 21 Tg, almost double the values seen in CLIM (around 11 Tg). In 2005 the tropospheric CO burden in both experiments is similar to the CLIM values of 2006 (around 10-12 Tg). Tropospheric O₃ burdens show a smaller increase (about 8%) in 2006 from about 7.4 Tg in CLIM to 8 Tg in BASE. The 2006 O₃ burdens in BASE are increased by about 30% relative to 2005, when the tropospheric O₃ burden is about 6 Tg in both experiments. It should be noted that the tropospheric O₃ mass shows considerable intra seasonal fluctuations. The tropospheric NO₂ burden in BASE is increased by about 20-30% compared to CLIM in September 2006 as a result of the increased fire emissions. During 2005 NO₂ burdens from BASE and CLIM are of similar magnitude.

The top panels of Figure 14 show the overall impact of changes to the tropospheric O₃ column due to dynamically and emission driven changes, by comparing BASE06 and BASE05 for October and December. The patterns are very similar to the ones seen in the MACC reanalysis composite O₃ anomalies at 500 hPa (Figure 4). The combined effect of dynamically induced and emission driven changes leads to an increase of TCO₃ by over 50% in a large area surrounding Indonesia and to a reduction of 10-30% over large parts of the Central Pacific. TCO₃ values are also reduced by more than 30% over Brazil. TCO₃ changes due to changes in the fire emissions alone (middle panels of Figure 14) can only explain part of the observed O₃ increase over Indonesia (which is consistent with the small differences between BASE and CLIM seen in Figure 13 for September to November 2006) and a small decrease

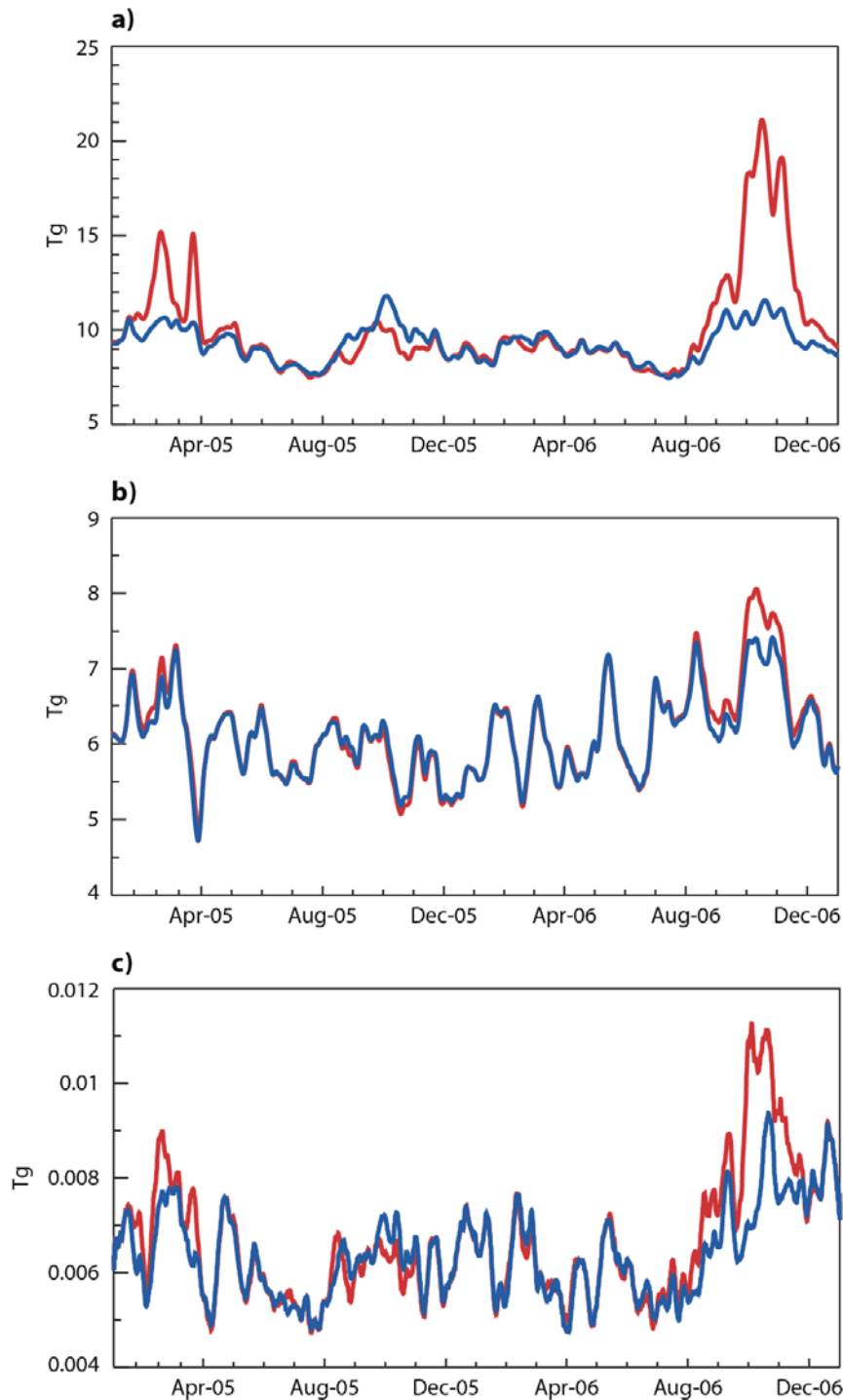


Figure 13: Timeseries of the tropospheric CO (a), O₃ (b), NO₂ (c) burden in Tg from BASE (red) and CLIM (blue) for 2005 and 2006 averaged over the area between 10°N, 10°S, 90°E, 130°E.

over Brazil, and can not explain the reduction of O₃ over the Pacific. The dynamically induced changes in October (Figure 14, bottom left) show a similar pattern to the overall differences between El Niño and normal conditions. This illustrates that while emission driven changes can explain about half of the total TCO₃ changes in a small area surrounding Indonesia, the TCO₃ increase outside this region and the negative O₃ anomaly over the

Pacific is unrelated to changes in the fire emissions. This is also confirmed by the December plots, when no fire related anomaly is seen any more (Figure 14, middle right). The dynamically driven O₃ anomalies persist into December and can explain most of the TCO₃ anomaly (Figure 14, bottom right). Over Indonesia the O₃ maxima are now located around 10°N and 10°S, and over the Pacific they are slightly smaller scale than in October.

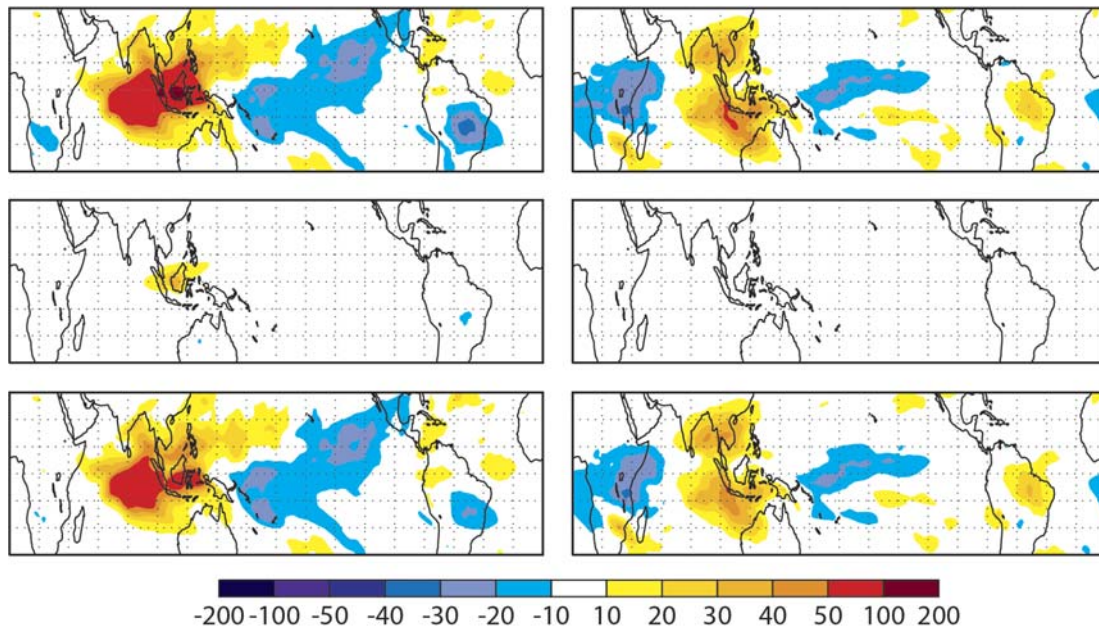


Figure 14: TCO₃ differences in % for October (left) and December (right) from the experiments BASE06 - BASE05 (top), BASE06 - CLIM06 (middle) and CLIM06 - CLIM05 (bottom). The top panels show the overall differences of TCO₃ due to the combined effects of El Niño related dynamical changes and changes in the fires emissions between El Niño and normal conditions. The middle panels show the impact of changes to the fire emissions under El Niño conditions, and the bottom panels show the impact of the El Niño induced dynamical changes on TCO₃ when climatological fire emissions are used for both years. Red colours indicate positive values, blue colours negative values.

The TCO₃ changes seen in the bottom panel of Figure 14 are anti-correlated with changes in specific humidity (Figure 15, top panels) pointing to an enhanced O₃ lifetime over Indonesia due to reduced humidity and hence OH concentrations. Furthermore, there is enhanced ascent over the Central Pacific and enhanced descent over Indonesia (Figure 15, bottom panels) so that increased upward transport of clean O₃ poor air over the Pacific and increased downward transport from the upper troposphere/stratosphere in the Indonesian region will also affect the tropospheric O₃ columns.

Figure 16 shows that the TCCO anomalies over Indonesia are almost entirely emission driven, in contrast to the TCO₃ anomalies seen in Figure 14. Using GFAS v1.0 emissions rather than climatological GFAS emissions can explain most of the TCCO anomaly over Indonesia in October, apart from two small positive dynamically induced anomalies to the east and west of

the maritime continent. By December, after the end of the fire season in Indonesia, the TCCO anomalies have almost gone.

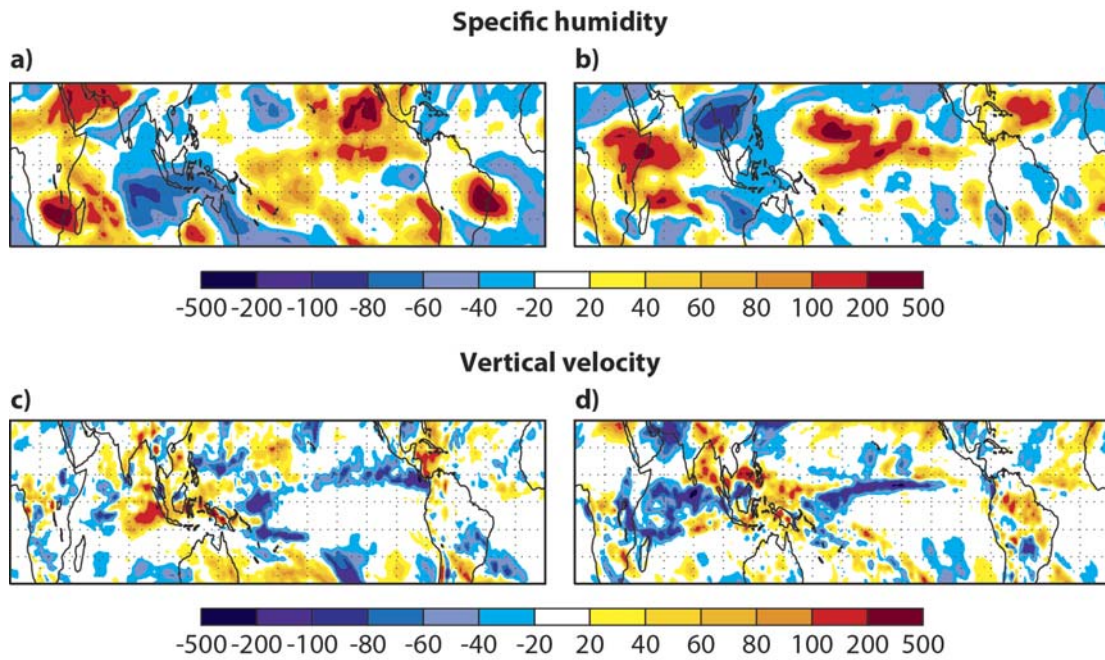


Figure 15: Top panels: Specific humidity differences at 500 hPa in % for October (left) and December (right) from the experiments BASE06 minus BASE05. Blue colours show reduced specific humidity, red colours increased values. Bottom panels: Differences of vertical velocity in mm/s for October (left) and December (right) from the experiments BASE06 minus BASE05. Blue colours show increased ascent, red colours increased descent.

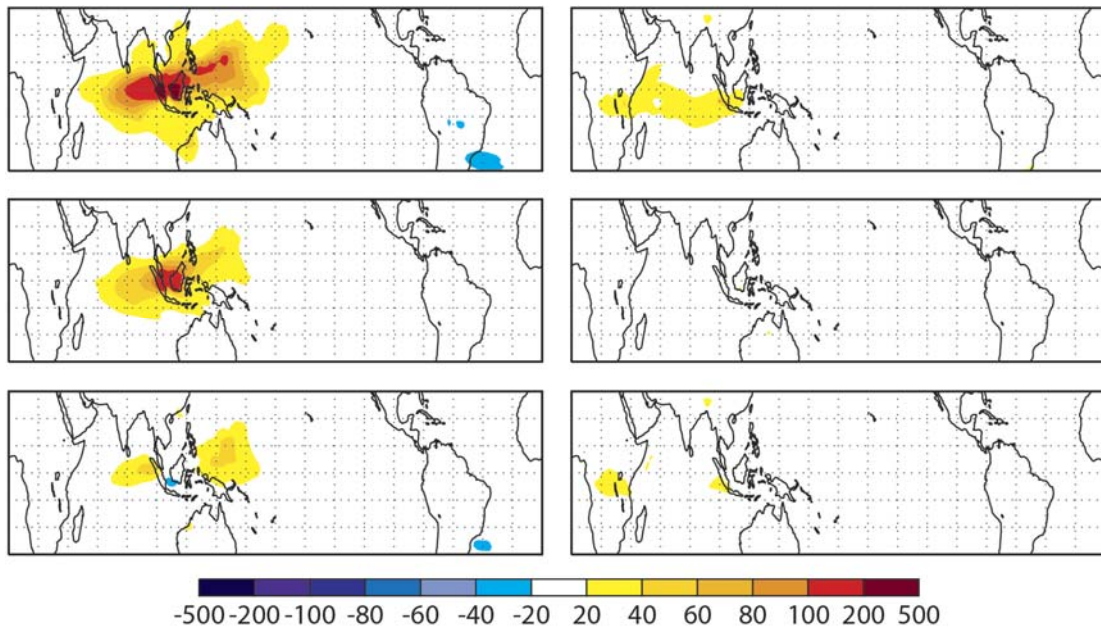


Figure 16: TCCO differences in % for October (left) and December (right) from the experiments BASE06 - BASE05 (top), BASE06 - CLIM06 (middle) and CLIM06 - CLIM05 (bottom). Red colours indicate positive values, blue colours negative values.

As for CO, the NO₂ and smoke aerosol anomalies are entirely emission driven (not shown). For both these fields, no anomalies are seen when comparing CLIM06 and CLIM05, and the anomalies seen when comparing BASE06 and BASE05 are gone by December. It is possible that we would also see some dynamically induced changes in the smoke aerosols if aerosols were interactive with the radiation scheme in the model runs. However, without this feedback the smoke aerosol anomalies are entirely emission driven.

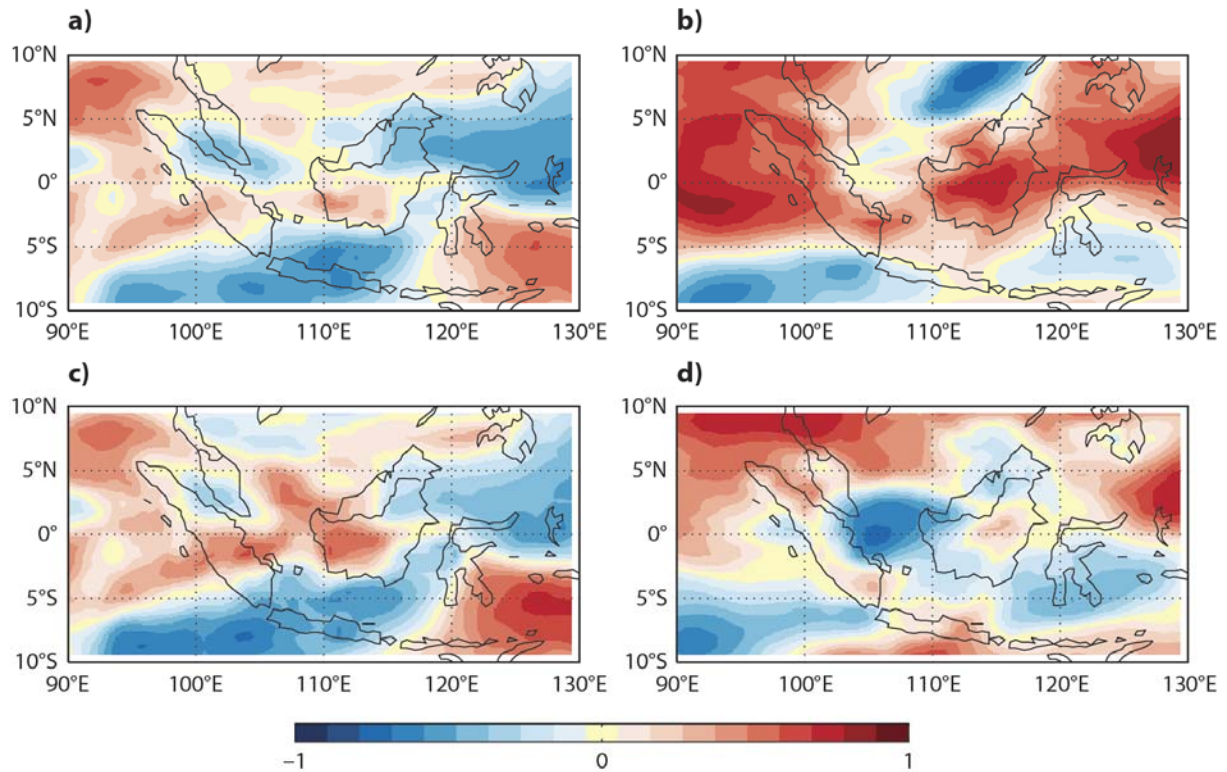


Figure 17: October O₃-CO correlations calculated for free tropospheric (approx. 750-350 hPa) column abundances over the Maritime Continent from the BASE (top) and CLIM (bottom) experiments for 2005 (left) and 2006 (right). Red colours indicated positive correlations, blue colours negative ones.

Figure 17 shows O₃-CO correlations for October 2005 and 2006 from the BASE and CLIM experiments. We focus only on October as the month with the largest anomaly in the fire emissions. Such correlations have been used in several studies (e.g., Kim et al., 2013, Voulgarakis et al., 2011 and references therein) going back to Fishman and Seiler (1983) to identify regions of photochemically produced O₃ (positive correlations) and O₃ from other sources (e.g. downward transport from stratosphere) as well as O₃ loss due to chemistry or deposition (negative correlations). In 2005 free tropospheric O₃-CO correlations (Figure 17 a and c) show a similar distribution across the Maritime Continent with relatively weak ($r < 0.7$) negative correlations extending from over the Indian Ocean south of Indonesia to East and West Malaysia and the Philippines, and positive correlations over northern and eastern Indonesia. Slight differences in the distribution of the O₃-CO correlations between Figure 17

(a) and (c) reflect differences in the fire emissions between the BASE and CLIM experiments. Larger differences are seen in the distribution of free tropospheric O₃-CO correlations between BASE and CLIM for the El Niño year of 2006 (Figure 17 b and d). The increased fire activity in 2006 (Figures 4 and 12) gives rise to larger positive ($r > 0.7$) O₃-CO correlations extending across most of Indonesia and Malaysia in the BASE experiment (Figure 17b) and reflect enhanced O₃ photochemistry associated with increased emissions of O₃ precursors from the fires. This agrees well with the area of increased O₃ concentrations due to fires seen in Figure 16 when comparing BASE06 and CLIM06. In contrast, O₃-CO correlations in the CLIM experiment (Figure 17d) are generally negative over much of Indonesia and Malaysia and reflect the influence of transport across the region and the lack of enhanced O₃ production when the climatological fire emissions are used.

4 Conclusions and outlook

In this paper O₃, CO, NO₂ and smoke aerosol fields from the MACC reanalysis (Inness et al., 2013) were used to identify the ENSO signal in Tropical atmospheric composition fields, concentrating on the months September to December. The MACC atmospheric composition fields show a clear ENSO related anomaly signal with increased O₃, CO, NO₂ and smoke aerosols over the Maritime Continent during El Niño years. O₃ also shows larger scale changes with decreased tropospheric columns over the Central and Eastern Pacific and increased columns over the Western Pacific and the Maritime continent that continue after the end of the Indonesian fire season.

Two simulations were carried out with the C-IFS model to quantify to what extent the ENSO signal seen in the atmospheric composition fields was due to changes in the biomass burning emissions or due to dynamically induced changes, e.g. related to changes in the vertical transport of O₃ from the lower troposphere and the stratosphere, and to changes of the photolysis of O₃ due to changes to OH. While the CO, NO₂ and smoke aerosol changes were almost entirely driven by changes in biomass burning emissions due to increased wild fires over the Maritime Continent during El Niño related drought conditions, changes in tropospheric O₃ were largely dynamically induced and only to a small part driven by changes in the emissions. The emission driven O₃ changes were confined to the area surrounding Indonesia, where enhanced photochemical O₃ production occurs under El Niño conditions because of increased biomass burning activities, while the larger-scale O₃ anomalies were dynamically induced.

Comparing simulations with daily GFAS v1.0 emissions for the years 2005 and 2006 and a daily GFAS v1.0 climatology of the period 2000 to 2014 showed that tropospheric CO was almost doubled in September 2006 relative to September 2005 due to increased fire emissions, NO₂ was increased by 20-30 % and O₃ by about 8%. For tropospheric O₃, dynamically induced changes dominated the differences between 2006 and 2005. The fire induced O₃ anomaly was smaller in magnitude and horizontal extent than the dynamically induced

changes which affected much of the Tropics. In 2006, tropospheric O₃ was increased by more than 50% over the Maritime Continent and Indian Ocean compared to 2005, and decreased by between 20-30 % over large parts of the Tropical Pacific when the same climatological fire emissions were used in both years. Only in a small area over Indonesia was the O₃ increase due to fires of similar magnitude to the dynamically induced changes. A future study will look in more detail at the chemistry budgets and chemical processes that cause the changes in the atmospheric composition fields.

The results from this paper show that the MACC system is able to successfully model the ENSO signal in atmospheric composition fields and could therefore be used in further studies to investigate the ocean-atmosphere response to ENSO induced changes in atmospheric composition. A first step would be to include the aerosol direct and indirect effects through the cloud microphysics in the radiation scheme of the IFS and to look at the feedback of fire-induced aerosols on climate. We would expect a positive feedback, i.e. reduced convection due to increased atmospheric stability, as carbonaceous aerosols usually absorb (and thus re-emit) a significant amount of solar radiation in the mid troposphere, and increased aerosol concentrations also lead to reduced land and sea surface temperatures. Their presence should therefore act to reduce convection and precipitation over the Maritime Continent. Including the aerosols in the radiation scheme will also affect the chemical fields through changes in the UV radiation and hence photolysis rates. A second step could see the coupling of the chemistry and aerosol fields by including heterogeneous chemistry on aerosols. In a final step it can be envisaged to fully couple the MACC system with ECMWF's ocean model to investigate how the forcing from ENSO induced changes to atmospheric composition fields can feedback on the ENSO dynamics.

MACC atmospheric composition data are freely available from www.copernicus-atmosphere.eu.

Acknowledgements

MACC-II was funded by the European Commission under the EU Seventh Research Framework Programme, contract number 283576. MACC-III was funded by the European Commission under Horizon2020 as a Coordination & Support Action, grant agreement number 633080.

Thanks to Anabel Bowen for help with the figures.

References

Allan, R. J., Lindesay, J. and Parker D. E.: El Niño Southern Oscillation and climatic variability. 416 pages, CSIRO Publishing, Collingwood, Victoria, Australia, ISBN: 9780643058033, 1996.

Aouizerats, B., van der Werf, G. R., Balasubramanian, R., and Betha, R.: Importance of transboundary transport of biomass burning emissions to regional air quality in Southeast Asia during a high fire event, *Atmos. Chem. Phys.*, 15, 363-373, doi:10.5194/acp-15-363-2015, 2015.

Barkley, M.: Description of MEGAN biogenic VOC emissions in GEOS-Chem, available at: <http://acmg.seas.harvard.edu/geos/wiki/docs/emissions/megan.pdf> (last access: 29 November 2012), 2010.

Benedetti, A., Morcrette, J.-J., Boucher, O., Dethof, A., Engelen, R. J., Fisher, M., Flentje, H., Huneeus, N., Jones, L., Kaiser, J. W., Kinne, S., Mangold, A., Razinger, M., Simmons, A. J., Suttie, M., and the GEMS-AER team: Aerosol analysis and forecast in the European Centre for Medium-Range Weather Forecasts Integrated Forecast System: 2. Data assimilation, *J. Geophys. Res.*, 114, D13205, doi:10.1029/2008JD011115, 2009.

Chandra, S., Ziemke, J. R., Duncan, B. N., Diehl, T. L., Livesey, N. J., and Froidevaux, L.: Effects of the 2006 El Niño on tropospheric ozone and carbon monoxide: implications for dynamics and biomass burning, *Atmos. Chem. Phys.*, 9, 4239-4249, doi:10.5194/acp-9-4239-2009, 2009.

Cariolle, D. and Teyssède, H.: A revised linear ozone photochemistry parameterization for use in transport and general circulation models: multi-annual simulations. *Atmos. Chem. Phys.*, 7, 2183-2196, 2007.

Chandra, S., Ziemke, J. R., Schoeberl, M. R., Froidevaux, L., Read, W. G., Levelt, P. F. and Bhartia, P. K.: Effects of the 2004 El Niño on tropospheric ozone and water vapour. *Geophys. Res. Lett.*, 34, L06802, doi:10.1029/2006GL028779, 2007.

Chandra, S., Ziemke, J. R., Bhartia, P. K. and Martin, R. V.: Tropical tropospheric ozone: Implications for dynamics and biomass burning, *J. Geophys. Res.*, 107(D14), doi:10.1029/2001JD000447, 2002.

Chandra, S., Ziemke, J.R., Min, W. and Read, W.G.: Effects of 1997-1998 El Niño on tropospheric ozone. *Geophys. Res. Lett.*, vol. 25, 20, 3867-3870, 1998.

Chung, C. E. and Ramanathan, V.: South Asian haze forcing: Remote impacts with implications to ENSO and AO. *Journal of Climate*, 16(11), 1791-1806, 2003.

Dee, D. P., Uppala, S. M., Simmons, A. J., Berrisford, P., Poli, P., Kobayashi, S., Andrae, U., Balsameda, M. A., Balsamo, G., Bauer, P., Bechtold, P., Beljaars, A. C. M., van de Berg, L., Bidlot, J., Bormann, N., Delsol, C., Dragani, R., Fuentes, M., Geer, A. J., Haimberger, L., Healy, S. B., Hersbach, H., H'olm, E. V., Isaksen, L., K'ollberg, P., K'ohler, M., Matricardi, M., McNally, A. P., Monge-Sanz, B. M., Morcrette, J.-J., Park, B.-K., Peubey, C., de Rosnay, P., Tavolato, C., Th'epaut, J.-N., and Vitarta, F.: The ERA-Interim reanalysis: configuration and performance of the data assimilation system, *Q. J. Roy. Meteor. Soc.*, 137, 553–597, 2011.

Dentener, F., Kinne, S., Bond, T., Boucher, O., Cofala, J., Generoso, S., Ginoux, P., Gong, S., Hoelzemann, J. J., Ito, A., Marelli, L., Penner, J. E., Putaud, J.-P., Textor, C., Schulz, M., van der Werf, G. R., and Wilson, J.: Emissions of primary aerosol and precursor gases in the years 2000 and 1750 prescribed data-sets for AeroCom, *Atmos. Chem. Phys.*, 6, 4321-4344, doi:10.5194/acp-6-4321-2006, 2006.

Duncan, B. N., Bey, I., Chin, M., Mickley, L. J., Fairlie, T. D., Martin, R. V. and Matsueda, H.: Indonesian wildfires of 1997: Impact on tropospheric chemistry, *J. Geophys. Res.*, 108, 4458, doi:10.1029/2002JD003195, D15, 2003.

Doherty, R. M., Stevenson, D. S., Johnson, C. E., Collins, W. J., and Sanderson, M. G.: Tropospheric ozone and El Niño–Southern Oscillation: Influence of atmospheric dynamics, biomass burning emissions, and future climate change. *J. Geophys. Res.*, 111, D19304, doi:10.1029/2005JD006849, 2006.

Fishman, J., and Seiler, W.: Correlative nature of ozone and carbon monoxide in the troposphere: Implications for the tropospheric ozone budget, *J. Geophys. Res.*, 88(C6), 3662–3670, doi:10.1029/JC088iC06p03662, 1983..

Flemming, J., Huijnen, V., Arteta, J., Bechtold, P., Beljaars, A., Blechschmidt, A.-M., Josse, B., Diamantakis, M., Engelen, R. J., Gaudel, A., Inness, A., Jones, L., Katragkou, E., Marecal, V., Peuch, V.-H., Richter, A., Schultz, M. G., Stein, O., and Tsikerdekis, A.: Tropospheric chemistry in the integrated forecasting system of ECMWF, *Geosci. Model Dev. Discuss.*, 7, 7733-7803, doi:10.5194/gmdd-7-7733-2014, 2014.

Fujiwara, M., Kita, K., Kawakami, S., et al.: Tropospheric ozone enhancements during the Indonesian forest fire events in 1994 and in 1997 as revealed by ground-based observations, *Geophys. Res. Lett.*, 26, 2417–2420, 1999.

Granier, C., Bessagnet, B., Bond, T., D'Angiola, A., Denier van der Gon, H., Frost, G. J., Heil, A., Kaiser, J. W., Kinne, S., Klimont, Z., Kloster, S., Lamarque, J.-F., Liousse, C., Masui, T., Meleux, F., Mieville, A., Ohara, R., Raut, J.-C., Riahi, K., Schultz, M. G., Smith, S. G., Thompson, A., van Aardenne, J., van der Werf, G. R., and van Vuuren, D. P.:

Evolution of anthropogenic and biomass burning emissions of air pollutants at global and regional scales during the 1980-2010 period. *Climatic Change*, 109, 163-190. DOI: 10.1007/s10584-011-0154-1, 2011.

Granier, C., Guenther, A., Lamarque, J., Mieville, A., Muller, J., Olivier, J., Orlando, J., Peters, J., Petron, G., Tyndall, G., and Wallens, S.: POET, a database of surface emissions of ozone precursors, available at: <http://www.aero.jussieu.fr/projet/ACCENT/POET.php> (last access: December 2014), 2005.

Guenther, A., Karl, T., Harley, P., Wiedinmyer, C., Palmer, P.I., and Geron, C.: Estimates of global terrestrial isoprene emissions using MEGAN (Model of Emissions of Gases and Aerosols from Nature), *Atmos. Chem. Phys.*, 6, 3181-3210, 2006.

Hauglustaine, D. A., Brasseur, G. P., Walters, S., Rasch, P. J., Müller, J.-F., Emmons, L. K. and Carroll, M. A.: MOZART, a global chemical transport model for ozone and related chemical tracers, 2, Model results and evaluation, *J. Geophys. Res.*, 103, 28291–28335, 1999.

Huijnen, V., Williams, J. E., and Flemming, J.: Modeling global impacts of heterogeneous loss of HO₂ on cloud droplets, ice particles and aerosols, *Atmos. Chem. Phys. Discuss.*, 14, 8575-8632, doi:10.5194/acpd-14-8575-2014, 2014.

Huijnen, V., Williams, J., van Weele, M., van Noije, T., Krol, M., Dentener, F., Segers, A., Houweling, S., Peters, W., de Laat, J., Boersma, F., Bergamaschi, P., van Velthoven, P., Le Sager, P., Eskes, H., Alkemade, F., Scheele, R., Nédélec, P., and Pätz, H.-W.: The global chemistry transport model TM5: description and evaluation of the tropospheric chemistry version 3.0, *Geosci. Model Dev.*, 3, 445-473, doi:10.5194/gmd-3-445-2010.

Inness, A., Baier, F., Benedetti, A., Bouarar, I., Chabrillat, S., Clark, H., Clerbaux, C., Coheur, P., Engelen, R. J., Errera, Q., Flemming, J., George, M., Granier, C., Hadji-Lazaro, J., Huijnen, V., Hurtmans, D., Jones, L., Kaiser, J. W., Kapsomenakis, J., Lefever, K., Leitão, J., Razinger, M., Richter, A., Schultz, M. G., Simmons, A. J., Suttie, M., Stein, O., Thépaut, J.-N., Thouret, V., Vrekoussis, M., Zerefos, C., and the MACC team: The MACC reanalysis: an 8 yr data set of atmospheric composition, *Atmos. Chem. Phys.*, 13, 4073-4109, doi:10.5194/acp-13-4073-2013, 2013.

Jacob, D.J., Liu, H., Mari, C. and Yantosca, R.M.: Harvard wet deposition scheme for GMI, Harvard University Atmospheric Chemistry Modeling Group, revised March 2000. http://acmg.seas.harvard.edu/geos/wiki_docs/deposition/wetdep.jacob_etal_2000.pdf (last access December 2014), 2000.

Kaiser, J. W., Heil, A., Andreae, M. O., Benedetti, A., Chubarova, N., Jones, L., Morcrette, J.-J., Razinger, M., Schultz, M. G., Suttie, M., and van der Werf, G. R.: Biomass burning

emissions estimated with a global fire assimilation system based on observed fire radiative power. *Biogeosciences*, 9:527–554, 2012.

Liu, H., Jacob, D.J., Bey, I., Yantosca, R.M.: Constraints from ^{210}Pb and ^7Be on wet deposition and transport in a global three-dimensional chemical tracer model driven by assimilated meteorological fields. *Journal of Geophysical Research* 106, 12109e12128, 2001.

Logan, J. A., Megretskaia, I., Nassar, R., Murray, L. T., Zhang, L., Bowman, K. W., Worden, H. M. and Luo, M.: Effects of the 2006 El Niño on tropospheric composition as revealed by data from the Tropospheric Emission Spectrometer (TES), *Geophys. Res. Lett.*, 35, L03816, doi:10.1029/2007GL031698, 2008.

Lyon, B.: The strength of El Niño and the spatial extent of tropical drought, *Geophys. Res. Lett.*, 31, L21204, doi:10.1029/2004GL020901, 2004.

Meijer, E.W., van Velthoven, P. F. J., Brunner, D. W., Huntrieser, H. and Kelder, H.: Improvement and evaluation of the parameterisation of nitrogen oxide production by lightning, *Physics and Chemistry of the Earth, Part C, Volume 26, Issue 8, Pages 577-583*, 2001.

Michou M., Laville, P., Serça, D., Fotiadi, A., Bouchou P., and Peuch, V.-H.: Measured and modeled dry deposition velocities over the ESCOMPTE area, *Atmos. Res.*, 74 (1-4), 89- 116, 2004.

Morcrette, J.-J., Benedetti, A., Jones, L., Kaiser, J. W., Razinger, M. and Suttie, M.: Prognostic aerosols in the ECMWF IFS: MACC vs GEMS aerosols. ECMWF RD Tech. Memo. 659, 2011. Available from http://old.ecmwf.int/publications/library/ecpublications/_pdf/tm/601-700/tm659.pdf (last access January 2015)

Nassar, R., Logan, J. A., Megretskaia, I. A., Murray, L. T., Zhang, L. and Jones, D. B. A.: Analysis of tropical tropospheric ozone, carbon monoxide, and water vapor during the 2006 El Niño using TES observations and the GEOS-Chem model, *J. Geophys. Res.*, 114, D17304, doi:10.1029/2009JD011760, 2009.

Olivier, J., Peters, J., Granier, C., Petron, G., Müller, J., and Wallens, S.: Present and future surface emissions of atmospheric compounds, POET report #2, EU project EVK2-1999-00011, available at, <http://www.aero.jussieu.fr/projet/ACCENT/POET.php> (last access December 2014), 2003.

Page, S. E., Siegert, F., Rieley, J. O., Boehm, H. D., Jaya, A., and Limin, S.: The amount of carbon released from peat and forest fires in Indonesia during 1997, *Nature*, 420, 61–65, doi:10.1038/nature01131, 2002.

Podgorny, I. A., Li, F. and Ramanathan, V.: Large Aerosol Radiative Forcing due to the 1997 Indonesian Forest Fire, *Geophys. Res. Lett.*, 30, 1028, doi:10.1029/2002GL015979, 2003.

Remy, S. and Kaiser, J. W.: Daily global fire radiative power fields estimation from one or two MODIS instruments, *Atmos. Chem. Phys.*, 14, 13377-13390, doi:10.5194/acp-14-13377-2014, 2014.

Sudo, K. and Takahashi, M.: Simulation of tropospheric ozone changes during 1997-1998 El Niño: Meteorological impact on tropospheric photochemistry, *Geophys. Res. Lett.*, 28, 4091–4094, 2001.

Tegen, I., Hollrig, P., Chin, M., Fung, I., Jacob, D. and Penner, J.: Contribution of different aerosol species to the global aerosol extinction optical thickness: Estimates from model results, *J. Geophys. Res.*, 102, 23,895-23,915, 1997.

Tosca, M. G., Randerson, J. T., Zender, C. S., Flanner, M. G., and Rasch, P. J.: Do biomass burning aerosols intensify drought in equatorial Asia during El Niño? *Atmos. Chem. Phys.*, 10, 3515-3528, doi:10.5194/acp-10-3515-2010, 2010.

van der Werf, G. R., Randerson, J. T., Giglio, L., Collatz, G. J., Mu, M., Kasibhatla, P. S., Morton, D. C., DeFries, R. S., Jin, Y., and van Leeuwen, T. T.: Global fire emissions and the contribution of deforestation, savanna, forest, agricultural, and peat fires (1997–2009), *Atmos. Chem. Phys.*, 10, 11707–11735, doi:10.5194/acp-10-11707-2010, 2010.

van der Werf, G. R., Randerson, J. T., Giglio, L., Collatz, G. J., Kasibhatla, P. S., and Arellano Jr., A. F.: Interannual variability in global biomass burning emissions from 1997 to 2004, *Atmos. Chem. Phys.*, 6, 3423-3441, doi:10.5194/acp-6-3423-2006, 2006.

Voulgarakis, A., Savage, N. H., Wild, O., Braesicke, P., Young, P. J., Carver, G. D., and Pyle, J. A.: Interannual variability of tropospheric composition: the influence of changes in emissions, meteorology and clouds, *Atmos. Chem. Phys.*, 10, 2491-2506, doi:10.5194/acp-10-2491-2010, 2010.

Wang, Y., Field, R. D. and Roswintiarti, O.: Trends in atmospheric haze induced by peat fires in Sumatra Island, Indonesia and El Niño phenomenon from 1973 to 2003, *Geophys. Res. Lett.*, 31, L04103, doi:10.1029/2003GL018853, 2004.

Ziemke, J. R. and Chandra, S.: La Niña and El Niño—induced variabilities of ozone in the tropical lower atmosphere during 1970–2001, *Geophys. Res. Lett.*, 30, 1142, doi:10.1029/2002GL016387, 3, 2003.

Ziemke, J. R. and Chandra, S.: Seasonal and interannual variabilities in tropical tropospheric ozone, *J. Geophys. Res.*, 104(D17), 21425–21442, doi:10.1029/1999JD900277, 1999.